

## Product datasheet for **AP50511PU-N**

### DOS (CBARP) (Center) Rabbit Polyclonal Antibody

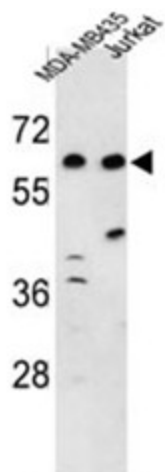
#### Product data:

|                       |   |
|-----------------------|---|
| Product Type:         | Primary Antibodies  |
| Applications:         | FC, WB  |
| Recommended Dilution: | <b>ELISA:</b> 1/1000.<br><b>Western blotting:</b> 1/100 - 1/500.<br><b>Flow cytometry:</b> 1/10 - 1/50.                           |
| Reactivity:           | Human   |
| Host:                 | Rabbit  |
| Isotype:              | Ig  |
| Clonality:            | Polyclonal  |
| Immunogen:            | KLH conjugated synthetic peptide between 429~459 amino acids from the Center region of human C19orf26                             |
| Specificity:          | This antibody reacts to C19orf26.   |
| Formulation:          | PBS containing 0.09% (W/V) sodium azide as preservative<br>State: Aff - Purified<br>State: Liquid purified Ig fraction            |
| Concentration:        | lot specific  |
| Purification:         | Affinity chromatography on Protein A  |
| Conjugation:          | Unconjugated  |
| Storage:              | Store the antibody undiluted at 2-8°C for one month or (in aliquots) at -20°C for longer.<br>Avoid repeated freezing and thawing. |
| Stability:            | Shelf life: one year from despatch.   |
| Gene Name:            | CACN beta subunit associated regulatory protein   |
| Database Link:        | <a href="#">Entrez Gene 255057 Human Q8N350</a>   |
| Note:                 | <b>Molecular Weight:</b> 75822 Da   |
| Protein Families:     | Transmembrane   |

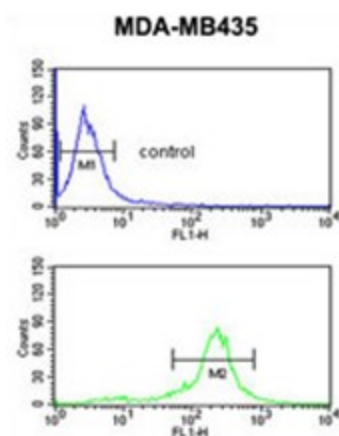


[View online »](#)

## Product images:



Western blot analysis of C19orf26 Antibody (Center) in MDA-MB435, Jurkat cell line lysates (35ug/lane). C19orf26 (arrow) was detected using the purified Pab.



C19orf26 Antibody (Center) flow cytometric analysis of MDA-MB435 cells (bottom histogram) compared to a negative control cell (top histogram). FITC-conjugated goat-anti-rabbit secondary antibodies were used for the analysis.