

Product datasheet for **AP50510PU-N**

C19orf18 (Center) Rabbit Polyclonal Antibody

Product data:

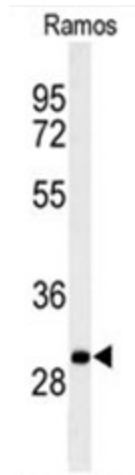
Product Type:	Primary Antibodies
Applications:	FC, IHC, WB
Recommended Dilution:	ELISA: 1/1000. Western blotting: 1/100 - 1/500. Immunohistochemistry on paraffin sections: 1/50 - 1/100. Flow cytometry: 1/10 - 1/50.
Reactivity:	Human
Host:	Rabbit
Isotype:	Ig
Clonality:	Polyclonal
Immunogen:	KLH conjugated synthetic peptide between 147~176 amino acids from the Central region of human C19orf18
Specificity:	This antibody reacts to C19orf18.
Formulation:	PBS containing 0.09% (W/V) sodium azide as preservative State: Aff - Purified State: Liquid purified Ig fraction
Concentration:	lot specific
Purification:	Affinity chromatography on Protein A
Conjugation:	Unconjugated
Storage:	Store the antibody undiluted at 2-8°C for one month or (in aliquots) at -20°C for longer. Avoid repeated freezing and thawing.
Stability:	Shelf life: one year from despatch.
Gene Name:	chromosome 19 open reading frame 18
Database Link:	Entrez Gene 147685 Human Q8NEA5
Synonyms:	MGC41906
Note:	Molecular Weight: 24151 Da



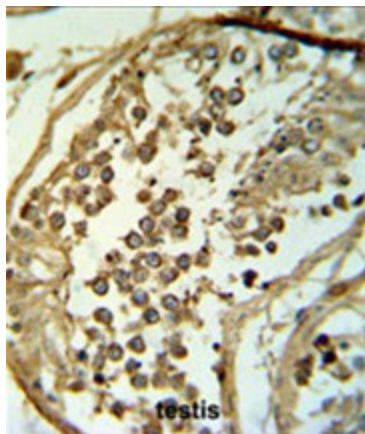
[View online »](#)

Protein Families: Transmembrane

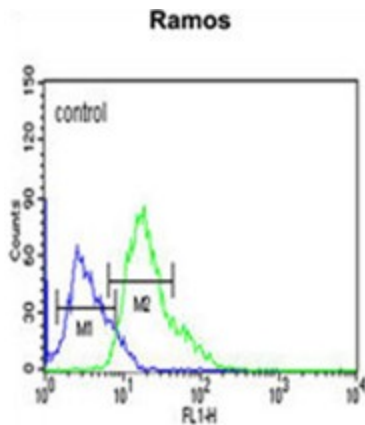
Product images:



Western blot analysis of C19orf18 Antibody (Center) in Ramos cell line lysates (35ug/lane). C19orf18 (arrow) was detected using the purified Pab.



C19orf18 Antibody (Center) IHC analysis in formalin fixed and paraffin embedded testis tissue followed by peroxidase conjugation of the secondary antibody and DAB staining. This data demonstrates the use of the C19orf18 Antibody (Center) for immunohistochemistry. Clinical relevance has not been evaluated.



C19orf18 Antibody (Center) flow cytometric analysis of Ramos cells (right histogram) compared to a negative control cell (left histogram). FITC-conjugated goat-anti-rabbit secondary antibodies were used for the analysis.