

Product datasheet for **AP50477PU-N**

C15orf41 (Center) Rabbit Polyclonal Antibody

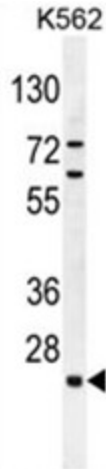
Product data:

Product Type:	Primary Antibodies
Applications:	WB
Recommended Dilution:	ELISA: 1/1000. Western blotting: 1/100 - 1/500.
Reactivity:	Human, Mouse
Host:	Rabbit
Isotype:	Ig
Clonality:	Polyclonal
Immunogen:	KLH conjugated synthetic peptide between 170-197 amino acids from the Central region of human C15orf41
Specificity:	This antibody reacts to C15orf41.
Formulation:	PBS containing 0.09% (W/V) sodium azide as preservative State: Aff - Purified State: Liquid purified Ig fraction
Concentration:	lot specific
Purification:	Affinity chromatography on Protein A
Conjugation:	Unconjugated
Storage:	Store the antibody undiluted at 2-8°C for one month or (in aliquots) at -20°C for longer. Avoid repeated freezing and thawing.
Stability:	Shelf life: one year from despatch.
Gene Name:	chromosome 15 open reading frame 41
Database Link:	Entrez Gene 84529 Human Q9Y2V0
Synonyms:	Protein HH114
Note:	Molecular Weight: 32264 Da

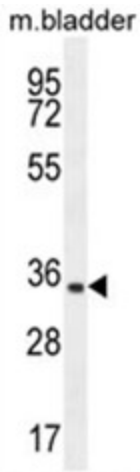


[View online »](#)

Product images:



C15orf41 Antibody (Center) western blot analysis in K562 cell line lysates (35ug/lane). This demonstrates the C15orf41 antibody detected the C15orf41 protein (arrow).



C15orf41 Antibody (Center) western blot analysis in mouse bladder tissue lysates (35ug/lane). This demonstrates the C15orf41 antibody detected the C15orf41 protein (arrow).