

Product datasheet for **AP50446PU-N**

C12orf48 (PARBP) (C-term) Rabbit Polyclonal Antibody

Product data:

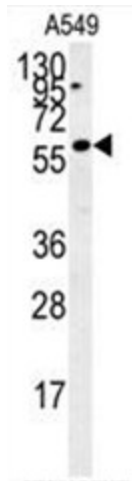
Product Type:	Primary Antibodies
Applications:	FC, IHC, WB
Recommended Dilution:	ELISA: 1/1000. Western blotting: 1/100 - 1/500. Immunohistochemistry on paraffin sections: 1/50 - 1/100. Flow Cytometry: 1/10 - 1/50.
Reactivity:	Human
Host:	Rabbit
Isotype:	Ig
Clonality:	Polyclonal
Immunogen:	KLH conjugated synthetic peptide between 529-558 amino acids from the C-terminal region of human C12orf48
Specificity:	This antibody reacts to C12orf48.
Formulation:	PBS containing 0.09% (W/V) sodium azide as preservative State: Aff - Purified State: Liquid purified Ig fraction
Concentration:	lot specific
Purification:	Affinity chromatography on Protein A
Conjugation:	Unconjugated
Storage:	Store the antibody undiluted at 2-8°C for one month or (in aliquots) at -20°C for longer. Avoid repeated freezing and thawing.
Stability:	Shelf life: one year from despatch.
Gene Name:	PARP1 binding protein
Database Link:	Entrez Gene 55010 Human Q9NWS1
Synonyms:	C12orf48, PARI, PARP-1 binding protein, PARP1-binding protein, PCNA-interacting partner
Note:	Molecular Weight: 65054 Da



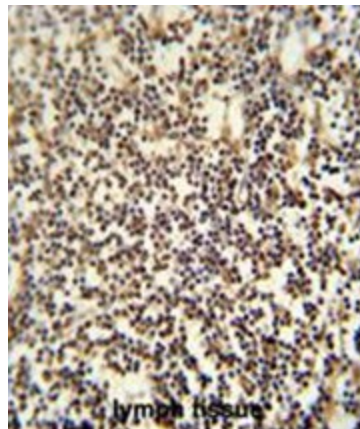
[View online »](#)

Protein Families: Druggable Genome

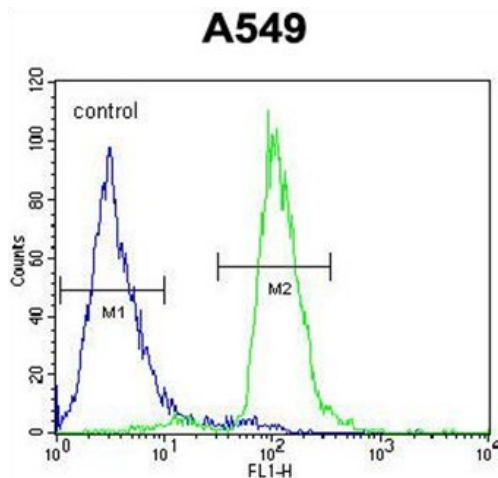
Product images:



C12orf48 Antibody (C-term) western blot analysis in A549 cell line lysates (35ug/lane). This demonstrates the C12orf48 antibody detected the FBXO34 protein (arrow).



C12orf48 antibody (C-term) immunohistochemistry analysis in formalin fixed and paraffin embedded human lymph tissue followed by peroxidase conjugation of the secondary antibody and DAB staining. This data demonstrates the use of the C12orf48 antibody (C-term) for immunohistochemistry. Clinical relevance has not been evaluated.



C12orf48 Antibody (C-term) flow cytometric analysis of A549 cells (right histogram) compared to a negative control cell (left histogram). FITC-conjugated goat-anti-rabbit secondary antibodies were used for the analysis.

