

Product datasheet for **AP50444PU-N**

NAP1 (NAA25) (Center) Rabbit Polyclonal Antibody

Product data:

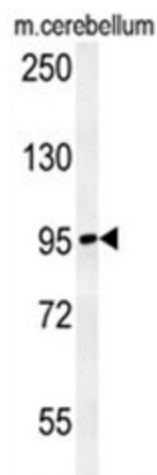
Product Type:	Primary Antibodies
Applications:	WB
Recommended Dilution:	ELISA: 1/1000. Western blotting: 1/100 - 1/500.
Reactivity:	Human, Mouse
Host:	Rabbit
Isotype:	Ig
Clonality:	Polyclonal
Immunogen:	KLH conjugated synthetic peptide between 727-756 amino acids from the Central region of human C12orf30
Specificity:	This antibody reacts to MDM20.
Formulation:	PBS containing 0.09% (W/V) sodium azide as preservative State: Aff - Purified State: Liquid purified Ig fraction
Concentration:	lot specific
Purification:	Affinity chromatography on Protein A
Conjugation:	Unconjugated
Storage:	Store the antibody undiluted at 2-8°C for one month or (in aliquots) at -20°C for longer. Avoid repeated freezing and thawing.
Stability:	Shelf life: one year from despatch.
Gene Name:	N(alpha)-acetyltransferase 25, NatB auxiliary subunit
Database Link:	Entrez Gene 80018 Human Q14CX7
Background:	This gene encodes the auxiliary subunit of the heteromeric N-terminal acetyltransferase B complex. This complex acetylates methionine residues that are followed by acidic or asparagine residues.
Synonyms:	C12orf30, NAP1, p120



[View online »](#)

Note: Molecular Weight: 112292 Da

Product images:



C12orf30 Antibody (Center) western blot analysis in mouse cerebellum tissue lysates (15ug/lane). This demonstrates the C12orf30 antibody detected C12orf30 protein (arrow).