

## Product datasheet for **AP50438PU-N**

### **C11orf74 (C-term) Rabbit Polyclonal Antibody**

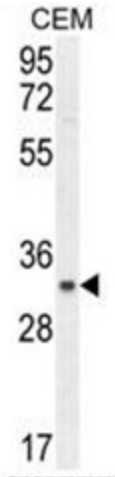
#### Product data:

Product Type:	Primary Antibodies
Applications:	FC, WB
Recommended Dilution:	<b>ELISA:</b> 1/1000. <b>Western blotting:</b> 1/100 - 1/500. <b>Flow Cytometry:</b> 1/10 - 1/50.
Reactivity:	Human
Host:	Rabbit
Isotype:	Ig
Clonality:	Polyclonal
Immunogen:	KLH conjugated synthetic peptide between 197-228 amino acids from the C-terminal region of human C11orf74
Specificity:	This antibody reacts to C11orf74.
Formulation:	PBS containing 0.09% (W/V) sodium azide as preservative State: Aff - Purified State: Liquid purified Ig fraction
Concentration:	lot specific
Purification:	Affinity chromatography on Protein A
Conjugation:	Unconjugated
Storage:	Store the antibody undiluted at 2-8°C for one month or (in aliquots) at -20°C for longer. Avoid repeated freezing and thawing.
Stability:	Shelf life: one year from despatch.
Gene Name:	chromosome 11 open reading frame 74
Database Link:	<a href="#">Entrez Gene 119710 Human Q86VG3</a>
Background:	The exact function of C11orf74 remains unknown.
Synonyms:	Protein HEPIS
Note:	<b>Molecular Weight:</b> 25407 Da

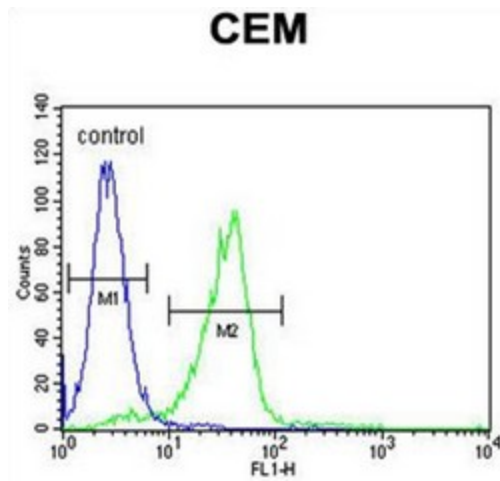


[View online »](#)

Product images:



C11orf74 Antibody (C-term) western blot analysis in CEM cell line lysates (35ug/lane). This demonstrates the C11orf74 antibody detected the C11orf74 protein (arrow).



C11orf74 Antibody (C-term) flow cytometric analysis of CEM cells (right histogram) compared to a negative control cell (left histogram). FITC-conjugated goat-anti-rabbit secondary antibodies were used for the analysis.