

## Product datasheet for **AP50427PU-N**

### EMSY (N-term) Rabbit Polyclonal Antibody

#### Product data:

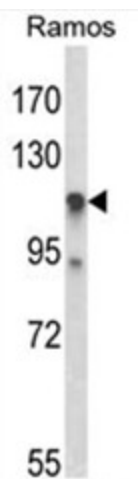
Product Type:	Primary Antibodies
Applications:	WB
Recommended Dilution:	<b>ELISA:</b> 1/1000. <b>Western blotting:</b> 1/100 - 1/500.
Reactivity:	Human
Host:	Rabbit
Isotype:	Ig
Clonality:	Polyclonal
Immunogen:	KLH conjugated synthetic peptide between 53–83 amino acids from the N-terminal region of human C11orf30
Specificity:	This antibody reacts to EMSY.
Formulation:	PBS containing 0.09% (W/V) sodium azide as preservative State: Aff - Purified State: Liquid purified Ig fraction
Concentration:	lot specific
Purification:	Affinity chromatography on Protein A
Conjugation:	Unconjugated
Storage:	Store the antibody undiluted at 2-8°C for one month or (in aliquots) at -20°C for longer. Avoid repeated freezing and thawing.
Stability:	Shelf life: one year from despatch.
Gene Name:	EMSY, BRCA2 interacting transcriptional repressor
Database Link:	<a href="#">Entrez Gene 56946 Human Q7Z589</a>
Background:	Regulator which is able to repress transcription, possibly via its interaction with a multiprotein chromatin remodeling complex that modifies the chromatin. Its interaction with BRCA2 suggests that it may play a central role in the DNA repair function of BRCA2.
Synonyms:	C11orf30, GL002



[View online »](#)

Note: **Molecular Weight:** 141468 Da

**Product images:**



Western blot analysis of C11orf30 Antibody (N-term) in Ramos cell line lysates (35ug/lane). C11orf30 (arrow) was detected using the purified Pab.