

Product datasheet for **AP50425PU-N**

C11orf20 (TEX40) (C-term) Rabbit Polyclonal Antibody

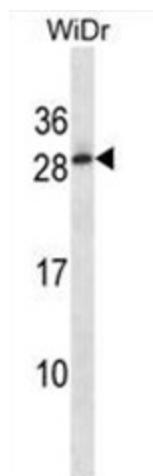
Product data:

Product Type:	Primary Antibodies
Applications:	WB
Recommended Dilution:	ELISA: 1/1000. Western blotting: 1/100 - 1/500.
Reactivity:	Human
Host:	Rabbit
Isotype:	Ig
Clonality:	Polyclonal
Immunogen:	KLH conjugated synthetic peptide between 171-200 amino acids from the C-terminal region of human C11orf20
Specificity:	This antibody reacts to C11orf20.
Formulation:	PBS containing 0.09% (W/V) sodium azide as preservative State: Aff - Purified State: Liquid purified Ig fraction
Concentration:	lot specific
Purification:	Affinity chromatography on Protein A
Conjugation:	Unconjugated
Storage:	Store the antibody undiluted at 2-8°C for one month or (in aliquots) at -20°C for longer. Avoid repeated freezing and thawing.
Stability:	Shelf life: one year from despatch.
Gene Name:	testis expressed 40
Database Link:	Entrez Gene 25858 Human Q9NTU4
Background:	C11orf20 may be involved in late spermatogenesis (By similarity.)
Synonyms:	Uncharacterized protein
Note:	Molecular Weight: 22839 Da



[View online »](#)

Product images:



C11orf20 Antibody (C-term) western blot analysis in WiDr cell line lysates (35ug/lane). This demonstrates the C11orf20 antibody detected the C11orf20 protein (arrow).