

## Product datasheet for **AP50420PU-N**

### **C10orf72 (VSTM4) (Center) Rabbit Polyclonal Antibody**

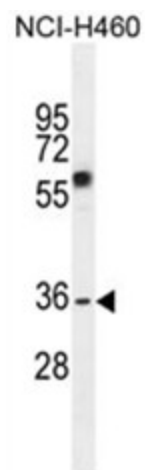
#### Product data:

Product Type:	Primary Antibodies
Applications:	WB
Recommended Dilution:	<b>ELISA:</b> 1/1000. <b>Western blotting:</b> 1/100 - 1/500.
Reactivity:	Human
Host:	Rabbit
Isotype:	Ig
Clonality:	Polyclonal
Immunogen:	KLH conjugated synthetic peptide between 149-177 amino acids from the Central region of human C10orf72
Specificity:	This antibody reacts to C10orf72.
Formulation:	PBS containing 0.09% (W/V) sodium azide as preservative State: Aff - Purified State: Liquid purified Ig fraction
Concentration:	lot specific
Purification:	Affinity chromatography on Protein A
Conjugation:	Unconjugated
Storage:	Store the antibody undiluted at 2-8°C for one month or (in aliquots) at -20°C for longer. Avoid repeated freezing and thawing.
Stability:	Shelf life: one year from despatch.
Gene Name:	V-set and transmembrane domain containing 4
Database Link:	<a href="#">Entrez Gene 196740 Human</a> <a href="#">Q8IW00</a>
Synonyms:	Uncharacterized Ig-like domain-containing protein
Note:	<b>Molecular Weight:</b> 36174 Da
Protein Families:	Transmembrane



[View online »](#)

## Product images:



C10orf72 Antibody (Center) western blot analysis in NCI-H460 cell line lysates (35ug/lane). This demonstrates the C10orf72 antibody detected the C10orf72 protein (arrow).