

Product datasheet for **AP50418PU-N**

Twinkle (TWNK) (C-term) Rabbit Polyclonal Antibody

Product data:

Product Type:	Primary Antibodies
Applications:	IHC, WB
Recommended Dilution:	ELISA: 1/1000. Western blotting: 1/100 - 1/500. Immunohistochemistry on paraffin sections: 1/10 - 1/50.
Reactivity:	Human
Host:	Rabbit
Isotype:	Ig
Clonality:	Polyclonal
Immunogen:	KLH conjugated synthetic peptide between 663-684 amino acids from the C-terminal region of human C10orf2
Specificity:	This antibody reacts to PEO1.
Formulation:	PBS containing 0.09% (W/V) sodium azide as preservative State: Aff - Purified State: Liquid purified Ig fraction
Concentration:	lot specific
Purification:	Affinity chromatography on Protein A
Conjugation:	Unconjugated
Storage:	Store the antibody undiluted at 2-8°C for one month or (in aliquots) at -20°C for longer. Avoid repeated freezing and thawing.
Stability:	Shelf life: one year from despatch.
Gene Name:	chromosome 10 open reading frame 2
Database Link:	Entrez Gene 56652 Human Q96RR1



[View online »](#)

Background:

This gene encodes a hexameric DNA helicase which unwinds short stretches of double-stranded DNA in the 5' to 3' direction and, along with mitochondrial single-stranded DNA binding protein and mtDNA polymerase gamma, is thought to play a key role in mtDNA replication. The protein localizes to the mitochondrial matrix and mitochondrial nucleoids. Mutations in this gene cause infantile onset spinocerebellar ataxia (IOSCA) and progressive external ophthalmoplegia (PEO) and are also associated with several mitochondrial depletion syndromes. Alternative splicing results in multiple transcript variants encoding distinct isoforms.

Synonyms:

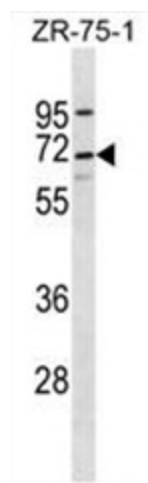
C10orf2

Note:

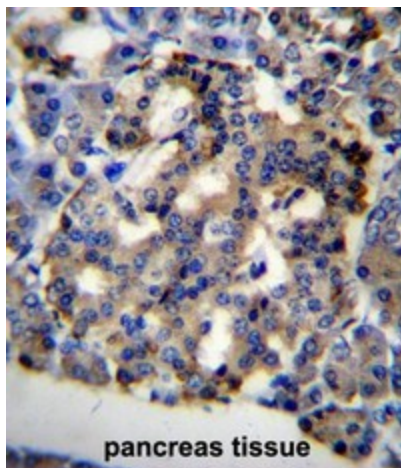
Molecular Weight: 77154 Da

Protein Families:

Druggable Genome

Product images:


C10orf2 Antibody (C-term) western blot analysis in ZR-75-1 cell line lysates (35ug/lane). This demonstrates the C10orf2 antibody detected the C10orf2 protein (arrow).



C10orf2 Antibody (C-term) immunohistochemistry analysis in formalin fixed and paraffin embedded human pancreas tissue followed by peroxidase conjugation of the secondary antibody and DAB staining. This data demonstrates the use of C10orf2 Antibody (C-term) for immunohistochemistry. Clinical relevance has not been evaluated.