

Product datasheet for **AP50415PU-N**

ACSM6 (C-term) Rabbit Polyclonal Antibody

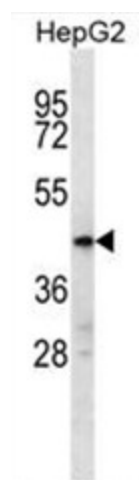
Product data:

Product Type:	Primary Antibodies
Applications:	IHC, WB
Recommended Dilution:	ELISA: 1/1000. Western blotting: 1/100 - 1/500. Immunohistochemistry on paraffin sections: 1/10 - 1/50.
Reactivity:	Human
Host:	Rabbit
Isotype:	Ig
Clonality:	Polyclonal
Immunogen:	KLH conjugated synthetic peptide between 432-460 amino acids from the C-terminal region of human C10orf129.
Specificity:	This antibody reacts to C10orf129.
Formulation:	PBS containing 0.09% (W/V) sodium azide as preservative State: Aff - Purified State: Liquid purified Ig fraction
Concentration:	lot specific
Purification:	Affinity chromatography on Protein A
Conjugation:	Unconjugated
Storage:	Store the antibody undiluted at 2-8°C for one month or (in aliquots) at -20°C for longer. Avoid repeated freezing and thawing.
Stability:	Shelf life: one year from despatch.
Gene Name:	acyl-CoA synthetase medium-chain family member 6
Database Link:	Entrez Gene 142827 Human Q6P461
Synonyms:	Acyl-coenzyme A synthetase ACSM6, mitochondrial, ACSM6
Note:	Molecular Weight: 53585 Da

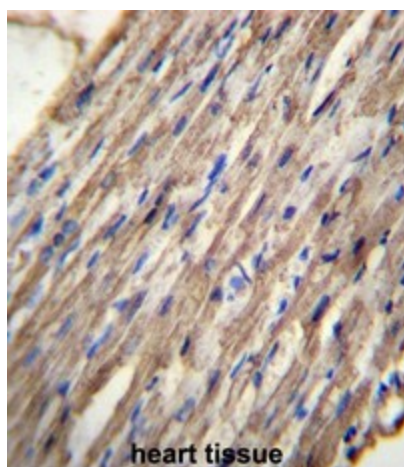


[View online »](#)

Product images:



C10orf129 Antibody (C-term) western blot analysis in HepG2 cell line lysates (35ug/lane). This demonstrates the C10orf129 antibody detected the C10orf129 protein (arrow).



C10orf129 Antibody (C-term) immunohistochemistry analysis in formalin fixed and paraffin embedded human heart tissue followed by peroxidase conjugation of the secondary antibody and DAB staining. This data demonstrates the use of C10orf129 Antibody (C-term) for immunohistochemistry. Clinical relevance has not been evaluated.