

## Product datasheet for **AP50412PU-N**

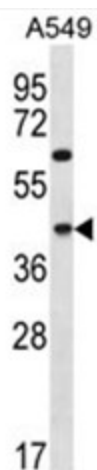
### CCDC109B (MCUB) (C-term) Rabbit Polyclonal Antibody

#### Product data:

Product Type:	Primary Antibodies
Applications:	WB
Recommended Dilution:	<b>ELISA:</b> 1/1000. <b>Western blotting:</b> 1/100 - 1/500.
Reactivity:	Human
Host:	Rabbit
Isotype:	Ig
Clonality:	Polyclonal
Immunogen:	KLH conjugated synthetic peptide between 298-328 amino acids from the C-terminal region of human C109B
Specificity:	This antibody reacts to C109B.
Formulation:	PBS containing 0.09% (W/V) sodium azide as preservative State: Aff - Purified State: Liquid purified Ig fraction
Concentration:	lot specific
Purification:	Affinity chromatography on Protein A
Conjugation:	Unconjugated
Storage:	Store the antibody undiluted at 2-8°C for one month or (in aliquots) at -20°C for longer. Avoid repeated freezing and thawing.
Stability:	Shelf life: one year from despatch.
Gene Name:	coiled-coil domain containing 109B
Database Link:	<a href="#">Entrez Gene 55013 Human Q9NWR8</a>
Synonyms:	CCD,Coiled-coil domain-containing protein 109B
Note:	<b>Molecular Weight:</b> 39082 Da
Protein Families:	Transmembrane



[View online »](#)

**Product images:**

C109B Antibody (C-term) western blot analysis in A549 cell line lysates (35ug/lane). This demonstrates the C109B antibody detected the C109B protein (arrow).