

## Product datasheet for **AP50411PU-N**

### **BVES (C-term) Rabbit Polyclonal Antibody**

#### **Product data:**

Product Type:	Primary Antibodies
Applications:	IHC, WB
Recommended Dilution:	<b>ELISA:</b> 1/1000. <b>Western blotting:</b> 1/100 - 1/500. <b>Immunohistochemistry on paraffin sections:</b> 1/10 - 1/50.
Reactivity:	Human
Host:	Rabbit
Isotype:	Ig
Clonality:	Polyclonal
Immunogen:	KLH conjugated synthetic peptide between 312-342 amino acids from the C-terminal region of human BVES
Specificity:	This antibody reacts to BVES.
Formulation:	PBS containing 0.09% (W/V) sodium azide as preservative State: Aff - Purified State: Liquid purified Ig fraction
Concentration:	lot specific
Purification:	Affinity chromatography on Protein A
Conjugation:	Unconjugated
Storage:	Store the antibody undiluted at 2-8°C for one month or (in aliquots) at -20°C for longer. Avoid repeated freezing and thawing.
Stability:	Shelf life: one year from despatch.
Gene Name:	blood vessel epicardial substance
Database Link:	<a href="#">Entrez Gene 11149 Human Q8NE79</a>



[View online »](#)

**Background:**

This gene encodes a member of the POP family of proteins containing three putative transmembrane domains. This gene is expressed in cardiac and skeletal muscle and may play an important role in development of these tissues. The mouse ortholog may be involved in the regeneration of adult skeletal muscle and may act as a cell adhesion molecule in coronary vasculogenesis. Two transcript variants encoding the same protein have been found for this gene.

**Synonyms:**

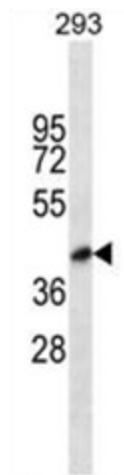
POP1, POPDC1

**Note:**

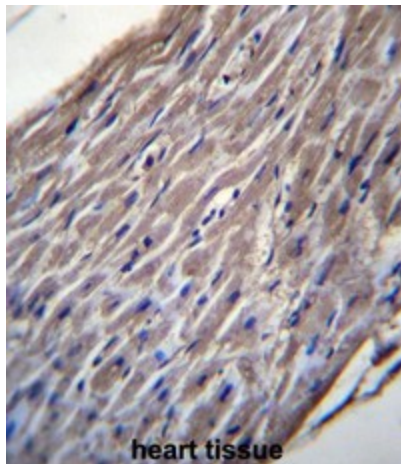
**Molecular Weight:** 41451 Da

**Protein Families:**

Transmembrane

**Product images:**


BVES Antibody (C-term) western blot analysis in 293 cell line lysates (35ug/lane). This demonstrates the BVES antibody detected the BVES protein (arrow).



BVES Antibody (C-term) immunohistochemistry analysis in formalin fixed and paraffin embedded human heart tissue followed by peroxidase conjugation of the secondary antibody and DAB staining. This data demonstrates the use of BVES Antibody (C-term) for immunohistochemistry. Clinical relevance has not been evaluated.