

## Product datasheet for **AP50407PU-N**

### BTNL3 (C-term) Rabbit Polyclonal Antibody

#### Product data:

Product Type:	Primary Antibodies
Applications:	FC, WB
Recommended Dilution:	<b>ELISA:</b> 1/1000. <b>Western blotting:</b> 1/100 - 1/500. <b>Flow Cytometry:</b> 1/10 - 1/50.
Reactivity:	Human
Host:	Rabbit
Isotype:	Ig
Clonality:	Polyclonal
Immunogen:	KLH conjugated synthetic peptide between 430-459 amino acids from the C-terminal region of human BTNL3
Specificity:	This antibody reacts to BTNL3.
Formulation:	PBS containing 0.09% (W/V) sodium azide as preservative State: Aff - Purified State: Liquid purified Ig fraction
Concentration:	lot specific
Purification:	Affinity chromatography on Protein A
Conjugation:	Unconjugated
Storage:	Store the antibody undiluted at 2-8°C for one month or (in aliquots) at -20°C for longer. Avoid repeated freezing and thawing.
Stability:	Shelf life: one year from despatch.
Gene Name:	butyrophilin like 3
Database Link:	<a href="#">Entrez Gene 10917 Human Q6UXE8</a>
Background:	BTNL3 is expressed in small intestine, colon, testis, spleen, and leukocyte and plays a role in lipid metabolism. Two isoforms have been described.
Synonyms:	Butyrophilin-like protein 3, BTNLR, COLF4100, Butyrophilin-like receptor

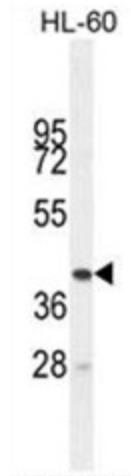


[View online »](#)

Note: **Molecular Weight:** 52251 Da

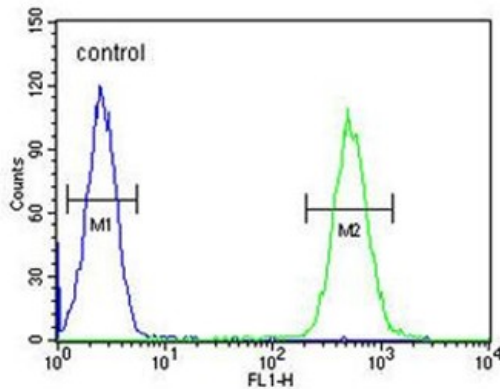
Protein Families: Druggable Genome, Transmembrane

**Product images:**



BTNL3 Antibody (C-term) western blot analysis in HL-60 cell line lysates (35ug/lane). This demonstrates the BTNL3 antibody detected the BTNL3 protein (arrow).

**HL-60**



BTNL3 Antibody (C-term) flow cytometric analysis of HL-60 cells (right histogram) compared to a negative control cell (left histogram). FITC-conjugated goat-anti-rabbit secondary antibodies were used for the analysis.