

Product datasheet for **AP50406PU-N**

BTN2A1 (C-term) Rabbit Polyclonal Antibody

Product data:

Product Type:	Primary Antibodies
Applications:	WB
Recommended Dilution:	ELISA: 1/1000. Western blotting: 1/100 - 1/500.
Reactivity:	Human
Host:	Rabbit
Isotype:	Ig
Clonality:	Polyclonal
Immunogen:	KLH conjugated synthetic peptide between 343-374 amino acids from the C-terminal region of human BTN2A1
Specificity:	This antibody reacts to BTN2A1.
Formulation:	PBS containing 0.09% (W/V) sodium azide as preservative State: Aff - Purified State: Liquid purified Ig fraction
Concentration:	lot specific
Purification:	Affinity chromatography on Protein A
Conjugation:	Unconjugated
Storage:	Store the antibody undiluted at 2-8°C for one month or (in aliquots) at -20°C for longer. Avoid repeated freezing and thawing.
Stability:	Shelf life: one year from despatch.
Gene Name:	butyrophilin subfamily 2 member A1
Database Link:	Entrez Gene 11120 Human Q7KYR7



[View online »](#)

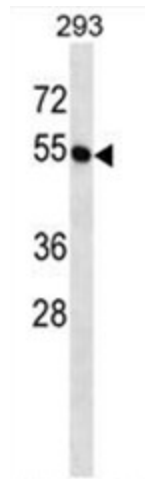
Background: BTN2A1 is a member of the BTN2 subfamily of genes, which encode proteins belonging to the butyrophilin protein family. The gene is located in a cluster on chromosome 6, consisting of seven genes belonging to the expanding B7/butyrophilin-like group, a subset of the immunoglobulin gene superfamily. The encoded protein is an integral plasma membrane B box protein involved in lipid, fatty-acid and sterol metabolism. Multiple alternatively spliced transcript variants encoding different isoforms have been found for this gene.

Synonyms: Butyrophilin subfamily 2 member A1, BT2.1, BTF1

Note: **Molecular Weight:** 59633 Da

Protein Families: Druggable Genome, Transmembrane

Product images:



BTN2A1 Antibody (C-term) western blot analysis in 293 cell line lysates (35ug/lane). This demonstrates the BTN2A1 antibody detected the BTN2A1 protein (arrow).