

## Product datasheet for **AP50405PU-N**

### BTG3 (Center) Rabbit Polyclonal Antibody

#### Product data:

Product Type:	Primary Antibodies
Applications:	IHC, WB
Recommended Dilution:	<b>ELISA:</b> 1/1000. <b>Western blotting:</b> 1/100 - 1/500. <b>Immunohistochemistry on paraffin sections:</b> 1/10 - 1/50.
Reactivity:	Human
Host:	Rabbit
Isotype:	Ig
Clonality:	Polyclonal
Immunogen:	KLH conjugated synthetic peptide between 107-137 amino acids from the Central region of human BTG3
Specificity:	This antibody reacts to BTG3.
Formulation:	PBS containing 0.09% (W/V) sodium azide as preservative State: Aff - Purified State: Liquid purified Ig fraction
Concentration:	lot specific
Purification:	Affinity chromatography on Protein A
Conjugation:	Unconjugated
Storage:	Store the antibody undiluted at 2-8°C for one month or (in aliquots) at -20°C for longer. Avoid repeated freezing and thawing.
Stability:	Shelf life: one year from despatch.
Gene Name:	BTG family member 3
Database Link:	<a href="#">Entrez Gene 10950 Human Q14201</a>
Background:	The protein encoded by this gene is a member of the BTG/Tob family. This family has structurally related proteins that appear to have antiproliferative properties. This encoded protein might play a role in neurogenesis in the central nervous system. Two transcript variants encoding different isoforms have been found for this gene.

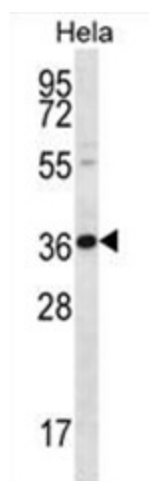


[View online »](#)

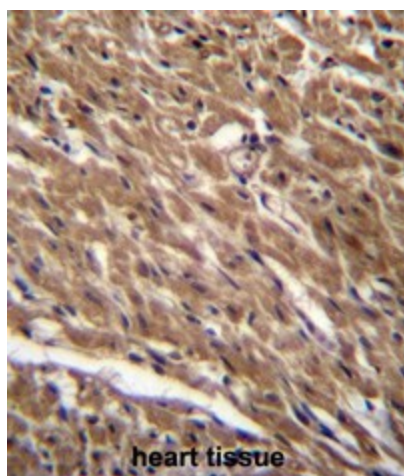
Synonyms: ANA, TOB5

Note: **Molecular Weight:** 29116 Da

### Product images:



BTG3 Antibody (Center) western blot analysis in HeLa cell line lysates (35ug/lane). This demonstrates the BTG3 antibody detected the BTG3 protein (arrow).



BTG3 Antibody (Center) immunohistochemistry analysis in formalin fixed and paraffin embedded human heart tissue followed by peroxidase conjugation of the secondary antibody and DAB staining. This data demonstrates the use of BTG3 Antibody (Center) for immunohistochemistry. Clinical relevance has not been evaluated.