

Product datasheet for **AP50404PU-N**

BTG2 (N-term) Rabbit Polyclonal Antibody

Product data:

Product Type:	Primary Antibodies
Applications:	IHC, WB
Recommended Dilution:	ELISA: 1/1000. Western blotting: 1/100 - 1/500. Immunohistochemistry on paraffin sections: 1/50 - 1/100.
Reactivity:	Human
Host:	Rabbit
Isotype:	Ig
Clonality:	Polyclonal
Immunogen:	KLH conjugated synthetic peptide between 40-69 amino acids from the N-terminal region of human BTG2
Specificity:	This antibody reacts to BTG2.
Formulation:	PBS containing 0.09% (W/V) sodium azide as preservative State: Aff - Purified State: Liquid purified Ig fraction
Concentration:	lot specific
Purification:	Affinity chromatography on Protein A
Conjugation:	Unconjugated
Storage:	Store the antibody undiluted at 2-8°C for one month or (in aliquots) at -20°C for longer. Avoid repeated freezing and thawing.
Stability:	Shelf life: one year from despatch.
Gene Name:	BTG family member 2
Database Link:	Entrez Gene 7832 Human P78543
Background:	The protein encoded by this gene is a member of the BTG/Tob family. This family has structurally related proteins that appear to have antiproliferative properties. This encoded protein is involved in the regulation of the G1/S transition of the cell cycle.
Synonyms:	PC3

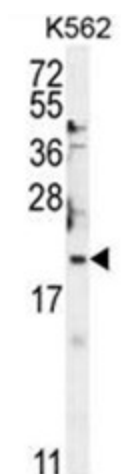


[View online »](#)

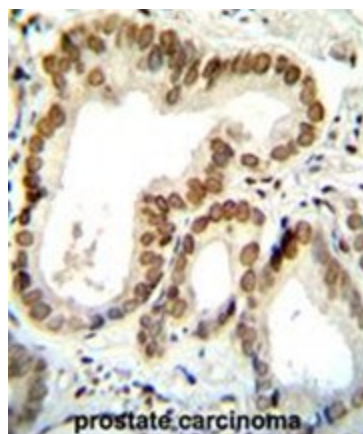
Note: **Molecular Weight:** 17416 Da

Protein Families: Transcription Factors

Product images:



BTG2 Antibody (N-term) western blot analysis in K562 cell line lysates (35ug/lane). This demonstrates the BTG2 antibody detected the BTG2 protein (arrow).



BTG2 Antibody (N-term) immunohistochemistry analysis in formalin fixed and paraffin embedded human prostate carcinoma followed by peroxidase conjugation of the secondary antibody and DAB staining. This data demonstrates the use of BTG2 Antibody (N-term) for immunohistochemistry. Clinical relevance has not been evaluated.