

Product datasheet for **AP50403PU-N**

BTF3 (N-term) Rabbit Polyclonal Antibody

Product data:

Product Type:	Primary Antibodies
Applications:	WB
Recommended Dilution:	ELISA: 1/1000. Western blotting: 1/100 - 1/500.
Reactivity:	Human, Mouse
Host:	Rabbit
Isotype:	Ig
Clonality:	Polyclonal
Immunogen:	KLH conjugated synthetic peptide between 1-30 amino acids from the N-terminal region of human BTF3
Specificity:	This antibody reacts to BTF3.
Formulation:	PBS containing 0.09% (W/V) sodium azide as preservative State: Aff - Purified State: Liquid purified Ig fraction
Concentration:	lot specific
Purification:	Affinity chromatography on Protein A
Conjugation:	Unconjugated
Storage:	Store the antibody undiluted at 2-8°C for one month or (in aliquots) at -20°C for longer. Avoid repeated freezing and thawing.
Stability:	Shelf life: one year from despatch.
Gene Name:	basic transcription factor 3
Database Link:	Entrez Gene 689 Human P20290
Background:	This gene encodes the basic transcription factor 3. This protein forms a stable complex with RNA polymerase IIB and is required for transcriptional initiation. Alternative splicing results in multiple transcript variants encoding different isoforms. This gene has multiple pseudogenes.
Synonyms:	NACB, OK/SW-cl.8

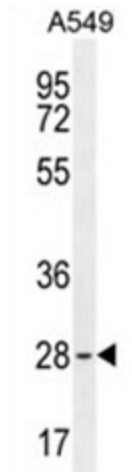


[View online »](#)

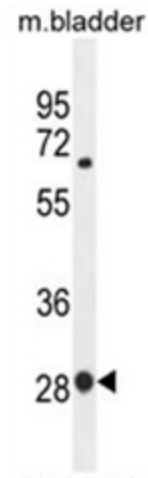
Note: **Molecular Weight:** 22168 Da

Protein Families: Transcription Factors

Product images:



BTF3 Antibody (N-term) western blot analysis in A549 cell line lysates (35ug/lane). This demonstrates the BTF3 antibody detected the BTF3 protein (arrow).



BTF3 Antibody (N-term) western blot analysis in mouse bladder tissue lysates (35ug/lane). This demonstrates the BTF3 antibody detected the BTF3 protein (arrow).