

## Product datasheet for **AP50401PU-N**

### **BTBD16 (N-term) Rabbit Polyclonal Antibody**

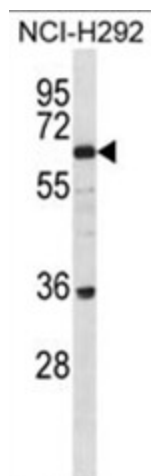
#### **Product data:**

Product Type:	Primary Antibodies
Applications:	WB
Recommended Dilution:	<b>ELISA:</b> 1/1000. <b>Western blotting:</b> 1/100 - 1/500.
Reactivity:	Human
Host:	Rabbit
Isotype:	Ig
Clonality:	Polyclonal
Immunogen:	KLH conjugated synthetic peptide between 36-66 amino acids from the N-terminal region of human BTBDG
Specificity:	This antibody reacts to BTBDG.
Formulation:	PBS containing 0.09% (W/V) sodium azide as preservative State: Aff - Purified State: Liquid purified Ig fraction
Concentration:	lot specific
Purification:	Affinity chromatography on Protein A
Conjugation:	Unconjugated
Storage:	Store the antibody undiluted at 2-8°C for one month or (in aliquots) at -20°C for longer. Avoid repeated freezing and thawing.
Stability:	Shelf life: one year from despatch.
Gene Name:	BTB domain containing 16
Database Link:	<a href="#">Entrez Gene 118663 Human Q32M84</a>
Synonyms:	BTB/POZ domain-containing protein 16, C10orf87
Note:	<b>Molecular Weight:</b> 58481 Da



[View online »](#)

## Product images:



BTBDG Antibody (N-term) western blot analysis in NCI-H292 cell line lysates (35ug/lane). This demonstrates the BTBDG antibody detected the BTBDG protein (arrow).