

Product datasheet for **AP50397PU-N**

BSND (C-term) Rabbit Polyclonal Antibody

Product data:

Product Type:	Primary Antibodies
Applications:	IHC, WB
Recommended Dilution:	ELISA: 1/1000. Western blotting: 1/100 - 1/500. Immunohistochemistry on paraffin sections: 1/50 - 1/100.
Reactivity:	Human, Mouse
Host:	Rabbit
Isotype:	Ig
Clonality:	Polyclonal
Immunogen:	KLH conjugated synthetic peptide between 291~320 amino acids from the C-terminal region of human BSND
Specificity:	This antibody reacts to Barttin.
Formulation:	PBS containing 0.09% (W/V) sodium azide as preservative State: Aff - Purified State: Liquid purified Ig fraction
Concentration:	lot specific
Purification:	Affinity chromatography on Protein A
Conjugation:	Unconjugated
Storage:	Store the antibody undiluted at 2-8°C for one month or (in aliquots) at -20°C for longer. Avoid repeated freezing and thawing.
Stability:	Shelf life: one year from despatch.
Gene Name:	barttin CLCNK type accessory beta subunit
Database Link:	Entrez Gene 7809 Human Q8WZ55
Background:	BSND encodes an essential beta subunit for CLC chloride channels. These heteromeric channels localize to basolateral membranes of renal tubules and of potassium-secreting epithelia of the inner ear.
Synonyms:	BSND, BART

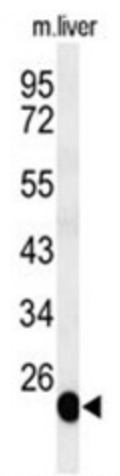


[View online »](#)

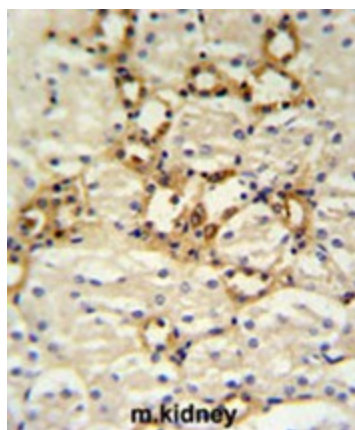
Note: **Molecular Weight:** 35197 Da

Protein Families: Druggable Genome, Transmembrane

Product images:



Western blot analysis of BSND Antibody (C-term) in mouse liver tissue lysates (35ug/lane). BSND (arrow) was detected using the purified Pab.



BSND Antibody (C-term) IHC analysis in formalin fixed and paraffin embedded mouse kidney tissue followed by peroxidase conjugation of the secondary antibody and DAB staining. This data demonstrates the use of the BSND Antibody (C-term) for immunohistochemistry. Clinical relevance has not been evaluated.