

## Product datasheet for **AP50395PU-N**

### **BSCL2 (N-term) Rabbit Polyclonal Antibody**

#### **Product data:**

Product Type:	Primary Antibodies
Applications:	IHC, WB
Recommended Dilution:	<b>ELISA:</b> 1/1000. <b>Western blotting:</b> 1/100 - 1/500. <b>Immunohistochemistry on paraffin sections:</b> 1/50 - 1/100.
Reactivity:	Human
Host:	Rabbit
Isotype:	Ig
Clonality:	Polyclonal
Immunogen:	KLH conjugated synthetic peptide between 85-115 amino acids from the N-terminal region of human BSCL2
Specificity:	This antibody reacts to Seipin.
Formulation:	PBS containing 0.09% (W/V) sodium azide as preservative State: Aff - Purified State: Liquid purified Ig fraction
Concentration:	lot specific
Purification:	Affinity chromatography on Protein A
Conjugation:	Unconjugated
Storage:	Store the antibody undiluted at 2-8°C for one month or (in aliquots) at -20°C for longer. Avoid repeated freezing and thawing.
Stability:	Shelf life: one year from despatch.
Gene Name:	BSCL2, seipin lipid droplet biogenesis associated
Database Link:	<a href="#">Entrez Gene 26580 Human Q96G97</a>



[View online »](#)

**Background:**

This gene encodes protein seipin, which is located in the endoplasmic reticulum and may be important for lipid droplet morphology. Mutations in this gene have been associated with congenital generalized lipodystrophy type 2 or Berardinelli-Seip syndrome, a rare autosomal recessive disease characterized by a near absence of adipose tissue and severe insulin resistance. Alternatively spliced transcript variants encoding different isoforms have been found for this gene

**Synonyms:**

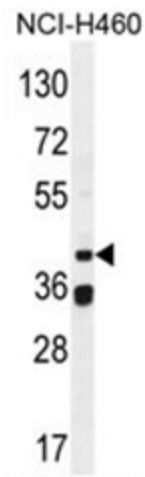
GNG3LG; HMN5; MGC4694; OTTHUMP00000198007; seipin; SPG17

**Note:**

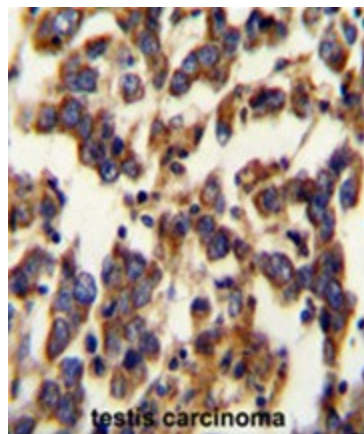
**Molecular Weight:** 44392 Da

**Protein Families:**

Druggable Genome, Transmembrane

**Product images:**


BSCL2 Antibody (N-term) western blot analysis in NCI-H460 cell line lysates (35ug/lane). This demonstrates the BSCL2 antibody detected the BSCL2 protein (arrow).



BSCL2 Antibody (N-term) immunohistochemistry analysis in formalin fixed and paraffin embedded human testis carcinoma followed by peroxidase conjugation of the secondary antibody and DAB staining. This data demonstrates the use of the BSCL2 Antibody (N-term) for immunohistochemistry. Clinical relevance has not been evaluated.