

Product datasheet for **AP50394PU-N**

BRUNOL6 (CELF6) (N-term) Rabbit Polyclonal Antibody

Product data:

Product Type:	Primary Antibodies
Applications:	IHC, WB
Recommended Dilution:	ELISA: 1/1000. Western blotting: 1/100 - 1/500. Immunohistochemistry on paraffin sections: 1/50 - 1/100.
Reactivity:	Human, Mouse
Host:	Rabbit
Isotype:	Ig
Clonality:	Polyclonal
Immunogen:	KLH conjugated synthetic peptide between 53-82 amino acids from the N-terminal region of human BRUNOL6
Specificity:	This antibody reacts to BRUNOL6.
Formulation:	PBS containing 0.09% (W/V) sodium azide as preservative State: Aff - Purified State: Liquid purified Ig fraction
Concentration:	lot specific
Purification:	Affinity chromatography on Protein A
Conjugation:	Unconjugated
Storage:	Store the antibody undiluted at 2-8°C for one month or (in aliquots) at -20°C for longer. Avoid repeated freezing and thawing.
Stability:	Shelf life: one year from despatch.
Gene Name:	CUGBP, Elav-like family member 6
Database Link:	Entrez Gene 76183 Mouse Entrez Gene 60677 Human Q96J87



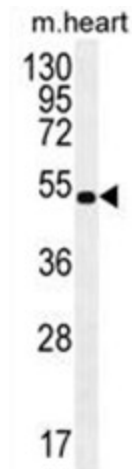
[View online »](#)

Background: Members of the CELF/BRUNOL protein family contain two N-terminal RNA recognition motif (RRM) domains, one C-terminal RRM domain, and a divergent segment of 160-230 aa between the second and third RRM domains. Members of this protein family regulate pre-mRNA alternative splicing and may also be involved in mRNA editing, and translation. Multiple alternatively spliced transcript variants encoding different isoforms have been identified in this gene.

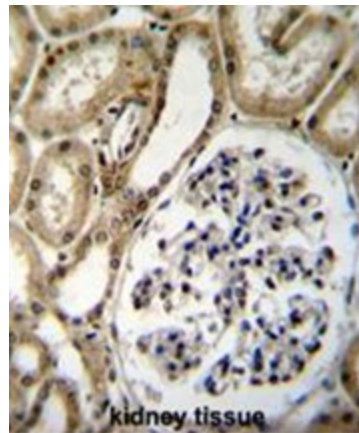
Synonyms: CELF-6, Bruno-like protein 6, BRUNOL-6

Note: **Molecular Weight:** 50477 Da

Product images:



BRUNOL6 Antibody (N-term) western blot analysis in mouse heart tissue lysates (35ug/lane). This demonstrates the BRUNOL6 antibody detected the BRUNOL6 protein (arrow).



BRUNOL6 Antibody (N-term) immunohistochemistry analysis in formalin fixed and paraffin embedded human kidney tissue followed by peroxidase conjugation of the secondary antibody and DAB staining. This data demonstrates the use of BRUNOL6 Antibody (N-term) for immunohistochemistry. Clinical relevance has not been evaluated.