

Product datasheet for **AP50393PU-N**

Bombesin Receptor 3 (BRS3) (Center) Rabbit Polyclonal Antibody

Product data:

Product Type:	Primary Antibodies
Applications:	WB
Recommended Dilution:	ELISA: 1/1000. Western blotting: 1/100 - 1/500.
Reactivity:	Human, Mouse
Host:	Rabbit
Isotype:	Ig
Clonality:	Polyclonal
Immunogen:	KLH conjugated synthetic peptide between 246~276 amino acids from the Central region of human BRS3
Specificity:	This antibody reacts to BRS3.
Formulation:	PBS containing 0.09% (W/V) sodium azide as preservative State: Aff - Purified State: Liquid purified Ig fraction
Concentration:	lot specific
Purification:	Affinity chromatography on Protein A
Conjugation:	Unconjugated
Storage:	Store the antibody undiluted at 2-8°C for one month or (in aliquots) at -20°C for longer. Avoid repeated freezing and thawing.
Stability:	Shelf life: one year from despatch.
Gene Name:	bombesin like receptor 3
Database Link:	Entrez Gene 12209 Mouse Entrez Gene 680 Human P32247



[View online »](#)

Background: Mammalian bombesin-like peptides (see MIM 137260) are widely distributed in the central nervous system as well as in the gastrointestinal tract, where they modulate smooth-muscle contraction, exocrine and endocrine processes, metabolism, and behavior. They bind to G protein-coupled receptors on the cell surface to elicit their effects. Bombesin-like peptide receptors include gastrin-releasing peptide receptor (MIM 305670), neuromedin B receptor (MIM 162341), and bombesin-like receptor-3 (BRS3) (Ohki-Hamazaki et al., 1997).

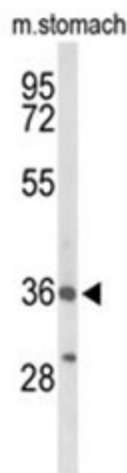
Synonyms: BRS-3, Bombesin receptor subtype-3

Note: **Molecular Weight:** 44411 Da

Protein Families: Druggable Genome, GPCR, Transmembrane

Protein Pathways: Neuroactive ligand-receptor interaction

Product images:



Western blot analysis of BRS3 Antibody (Center) in mouse stomach tissue lysates (35ug/lane). BRS3 (arrow) was detected using the purified Pab