

## Product datasheet for **AP50392PU-N**

### **BRMS1L (N-term) Rabbit Polyclonal Antibody**

#### Product data:

Product Type:	Primary Antibodies
Applications:	WB
Recommended Dilution:	<b>ELISA:</b> 1/1000. <b>Western blotting:</b> 1/100 - 1/500.
Reactivity:	Human, Mouse
Host:	Rabbit
Isotype:	Ig
Clonality:	Polyclonal
Immunogen:	KLH conjugated synthetic peptide between 1-30 amino acids from the N-terminal region of human BRMS1L
Specificity:	This antibody reacts to BRMS1L.
Formulation:	PBS containing 0.09% (W/V) sodium azide as preservative State: Aff - Purified State: Liquid purified Ig fraction
Concentration:	lot specific
Purification:	Affinity chromatography on Protein A
Conjugation:	Unconjugated
Storage:	Store the antibody undiluted at 2-8°C for one month or (in aliquots) at -20°C for longer. Avoid repeated freezing and thawing.
Stability:	Shelf life: one year from despatch.
Gene Name:	breast cancer metastasis-suppressor 1-like
Database Link:	<a href="#">Entrez Gene 52592 Mouse</a> <a href="#">Entrez Gene 84312 Human</a> <a href="#">Q5PSV4</a>
Background:	The protein encoded by this gene shows sequence similarity to the human breast carcinoma metastasis suppressor (BRMS1) protein and the mammalian Sds3 (suppressor of defective silencing 3) proteins. This protein is a component of the mSin3a family of histone deacetylase complexes (HDAC).
Synonyms:	BRMS1-homolog protein p40, BRMS1-like protein p40

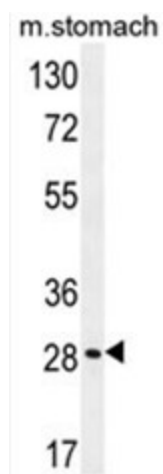


[View online »](#)

Note: **Molecular Weight:** 37629 Da

Protein Families: Druggable Genome

### Product images:



BRMS1L Antibody (N-term) western blot analysis in mouse stomach tissue lysates (35ug/lane). This demonstrates the BRMS1L antibody detected the BRMS1L protein (arrow).