

Product datasheet for **AP50391PU-N**

BRIP1 (N-term) Rabbit Polyclonal Antibody

Product data:

Product Type:	Primary Antibodies
Applications:	WB
Recommended Dilution:	ELISA: 1/1000. Western blotting: 1/100 - 1/500.
Reactivity:	Human, Mouse
Host:	Rabbit
Isotype:	Ig
Clonality:	Polyclonal
Immunogen:	KLH conjugated synthetic peptide between 135-167 amino acids from the N-terminal region of human BRIP1
Specificity:	This antibody reacts to BRIP1.
Formulation:	PBS containing 0.09% (W/V) sodium azide as preservative State: Aff - Purified State: Liquid purified Ig fraction
Concentration:	lot specific
Purification:	Affinity chromatography on Protein A
Conjugation:	Unconjugated
Storage:	Store the antibody undiluted at 2-8°C for one month or (in aliquots) at -20°C for longer. Avoid repeated freezing and thawing.
Stability:	Shelf life: one year from despatch.
Gene Name:	BRCA1 interacting protein C-terminal helicase 1
Database Link:	Entrez Gene 83990 Human Q9BX63
Background:	BRIP1 is a member of the RecQ DEAH helicase family and interacts with the BRCT repeats of breast cancer, type 1 (BRCA1). The bound complex is important in the normal double-strand break repair function of breast cancer, type 1 (BRCA1).
Synonyms:	BACH1, Protein FACJ, Fanconi anemia group J protein

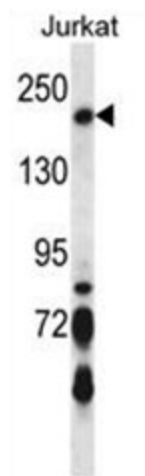


[View online »](#)

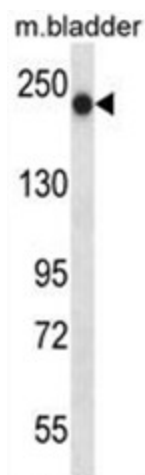
Note: **Molecular Weight:** 140878 Da

Protein Families: Druggable Genome

Product images:



BRIP1 Antibody (N-term) western blot analysis in Jurkat cell line lysates (35ug/lane). This demonstrates the BRIP1 antibody detected the BRIP1 protein (arrow).



BRIP1 Antibody (N-term) western blot analysis in mouse bladder tissue lysates (35ug/lane). This demonstrates the BRIP1 antibody detected the BRIP1 protein (arrow).