

Product datasheet for **AP50389PU-N**

BRF1 (Center) Rabbit Polyclonal Antibody

Product data:

Product Type:	Primary Antibodies
Applications:	WB
Recommended Dilution:	ELISA: 1/1000. Western blotting: 1/100 - 1/500.
Reactivity:	Human
Host:	Rabbit
Isotype:	Ig
Clonality:	Polyclonal
Immunogen:	KLH conjugated synthetic peptide between 313-342 amino acids from the Central region of human BRF1
Specificity:	This antibody reacts to BRF1.
Formulation:	PBS containing 0.09% (W/V) sodium azide as preservative State: Aff - Purified State: Liquid purified Ig fraction
Concentration:	lot specific
Purification:	Affinity chromatography on Protein A
Conjugation:	Unconjugated
Storage:	Store the antibody undiluted at 2-8°C for one month or (in aliquots) at -20°C for longer. Avoid repeated freezing and thawing.
Stability:	Shelf life: one year from despatch.
Gene Name:	BRF1, RNA polymerase III transcription initiation factor 90 kDa subunit
Database Link:	Entrez Gene 2972 Human Q92994



[View online »](#)

Background:

This gene encodes one of the three subunits of the RNA polymerase III transcription factor complex. This complex plays a central role in transcription initiation by RNA polymerase III on genes encoding tRNA, 5S rRNA, and other small structural RNAs. The gene product belongs to the TF2B family. Two alternatively spliced variants encoding different isoforms, that function at different promoters transcribed by RNA polymerase III, have been identified. Other transcript variants are possible, but their full-length natures have not been completely characterized. [provided by RefSeq]

Synonyms:

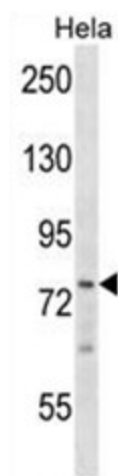
BRF, GTF3B, TAF3B2, TAF3C

Note:

Molecular Weight: 73840 Da

Protein Families:

Transcription Factors

Product images:

BRF1 Antibody (Center) western blot analysis in HeLa cell line lysates (35ug/lane). This demonstrates the BRF1 antibody detected the BRF1 protein (arrow).