

Product datasheet for **AP50386PU-N**

BPI (Center) Rabbit Polyclonal Antibody

Product data:

Product Type:	Primary Antibodies
Applications:	FC, IHC, WB
Recommended Dilution:	ELISA: 1/1000. Western blotting: 1/50 - 1/100. Immunohistochemistry on paraffin sections: 1/50 - 1/100. Flow cytometric: 1/10 - 1/50.
Reactivity:	Human
Host:	Rabbit
Isotype:	Ig
Clonality:	Polyclonal
Immunogen:	KLH conjugated synthetic peptide between 301~331 amino acids from the Center region of human BPI
Specificity:	This antibody reacts to BPI.
Formulation:	PBS containing 0.09% (W/V) sodium azide as preservative State: Purified State: Liquid purified Ig fraction
Concentration:	lot specific
Purification:	Saturated Ammonium Sulfate (SAS) precipitation
Conjugation:	Unconjugated
Storage:	Store the antibody undiluted at 2-8°C for one month or (in aliquots) at -20°C for longer. Avoid repeated freezing and thawing.
Stability:	Shelf life: one year from despatch.
Gene Name:	bactericidal/permeability-increasing protein
Database Link:	Entrez Gene 671 Human P17213
Background:	BPI encodes a lipopolysaccharide binding protein. It is associated with human neutrophil granules and has bactericidal activity on gram-negative organisms.
Synonyms:	CAP57

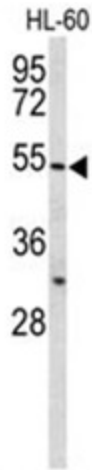


[View online »](#)

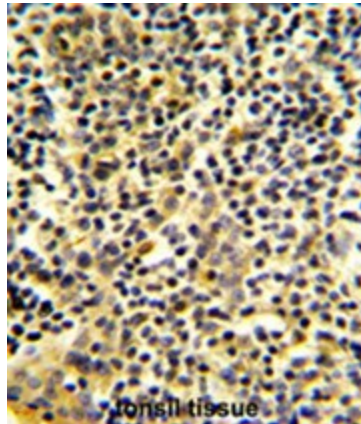
Note: **Molecular Weight:** 53900 Da

Protein Families: Druggable Genome, Transmembrane

Product images:

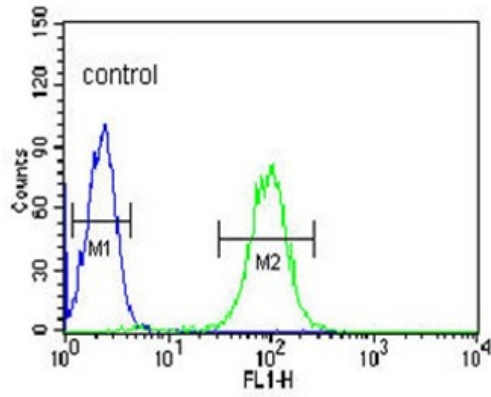


Western blot analysis of BPI Antibody (Center) in HL-60 cell line lysates (35ug/lane). BPI (arrow) was detected using the purified Pab.



Formalin-fixed and paraffin-embedded human tonsil tissue reacted with BPI Antibody (Center), which was peroxidase-conjugated to the secondary antibody, followed by DAB staining. This data demonstrates the use of this antibody for immunohistochemistry; clinical relevance has not been evaluated.

HL-60



BPI Antibody (Center) flow cytometric analysis of HL-60 cells (right histogram) compared to a negative control cell (left histogram). FITC-conjugated goat-anti-rabbit secondary antibodies were used for the analysis.