

Product datasheet for **AP50383PU-N**

BOULE (BOLL) (N-term) Rabbit Polyclonal Antibody

Product data:

Product Type:	Primary Antibodies
Applications:	WB
Recommended Dilution:	ELISA: 1/1000. Western blotting: 1/100 - 1/500.
Reactivity:	Human
Host:	Rabbit
Isotype:	Ig
Clonality:	Polyclonal
Immunogen:	KLH conjugated synthetic peptide between 22-51 amino acids from the N-terminal region of human BOLL
Specificity:	This antibody reacts to BOLL.
Formulation:	PBS containing 0.09% (W/V) sodium azide as preservative State: Aff - Purified State: Liquid purified Ig fraction
Concentration:	lot specific
Purification:	Affinity chromatography on Protein A
Conjugation:	Unconjugated
Storage:	Store the antibody undiluted at 2-8°C for one month or (in aliquots) at -20°C for longer. Avoid repeated freezing and thawing.
Stability:	Shelf life: one year from despatch.
Gene Name:	boule homolog, RNA binding protein
Database Link:	Entrez Gene 66037 Human Q8N9W6
Background:	BOLL belongs to the DAZ gene family required for germ cell development. It encodes an RNA-binding protein which is more similar to Drosophila Boule than to human proteins encoded by genes DAZ (deleted in azoospermia) or DAZL (deleted in azoospermia-like). Loss of this gene function results in the absence of sperm in semen (azoospermia). Histological studies demonstrated that the primary defect is at the meiotic G2/M transition.

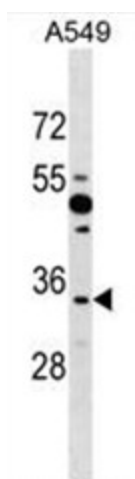


[View online »](#)

Synonyms: Protein boule-like

Note: **Molecular Weight:** 31301 Da

Product images:



BOLL Antibody (N-term) western blot analysis in A549 cell line lysates (35ug/lane). This demonstrates the BOLL antibody detected the BOLL protein (arrow).