

## Product datasheet for **AP50381PU-N**

### **BNC1 (N-term) Rabbit Polyclonal Antibody**

#### **Product data:**

Product Type:	Primary Antibodies
Applications:	WB
Recommended Dilution:	<b>ELISA:</b> 1/1000. <b>Western blotting:</b> 1/100 - 1/500.
Reactivity:	Human
Host:	Rabbit
Isotype:	Ig
Clonality:	Polyclonal
Immunogen:	KLH conjugated synthetic peptide between 1-30 amino acids from the N-terminal region of human BNC1
Specificity:	This antibody reacts to BNC1.
Formulation:	PBS containing 0.09% (W/V) sodium azide as preservative State: Aff - Purified State: Liquid purified Ig fraction
Concentration:	lot specific
Purification:	Affinity chromatography on Protein A
Conjugation:	Unconjugated
Storage:	Store the antibody undiluted at 2-8°C for one month or (in aliquots) at -20°C for longer. Avoid repeated freezing and thawing.
Stability:	Shelf life: one year from despatch.
Gene Name:	basonuclin 1
Database Link:	<a href="#">Entrez Gene 646 Human Q01954</a>



[View online »](#)

**Background:**

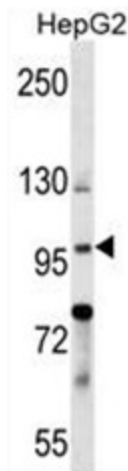
The protein encoded by this gene is a zinc finger protein present in the basal cell layer of the epidermis and in hair follicles. It is also found in abundance in the germ cells of testis and ovary. This protein is thought to play a regulatory role in keratinocyte proliferation and it may also be a regulator for rRNA transcription. This gene seems to have multiple alternatively spliced transcript variants, but their full-length nature is not known yet. There seems to be evidence of multiple polyadenylation sites for this gene.

**Synonyms:**

Zinc finger protein basonuclin-1

**Note:**

**Molecular Weight:** 110972 Da

**Product images:**

BNC1 Antibody (N-term) western blot analysis in HepG2 cell line lysates (35ug/lane). This demonstrates the BNC1 antibody detected the BNC1 protein (arrow).