

Product datasheet for **AP50374PU-N**

SHARP2 (BHLHE40) (N-term) Rabbit Polyclonal Antibody

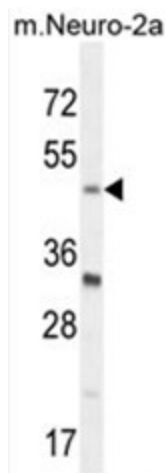
Product data:

Product Type:	Primary Antibodies
Applications:	WB
Recommended Dilution:	ELISA: 1/1000. Western blotting: 1/100 - 1/500.
Reactivity:	Human, Mouse
Host:	Rabbit
Isotype:	Ig
Clonality:	Polyclonal
Immunogen:	KLH conjugated synthetic peptide between 29-59 amino acids from the N-terminal region of human BHLHE40
Specificity:	This antibody reacts to BHLHB2.
Formulation:	PBS containing 0.09% (W/V) sodium azide as preservative State: Aff - Purified State: Liquid purified Ig fraction
Concentration:	lot specific
Purification:	Affinity chromatography on Protein A
Conjugation:	Unconjugated
Storage:	Store the antibody undiluted at 2-8°C for one month or (in aliquots) at -20°C for longer. Avoid repeated freezing and thawing.
Stability:	Shelf life: one year from despatch.
Gene Name:	basic helix-loop-helix family member e40
Database Link:	Entrez Gene 20893 Mouse Entrez Gene 8553 Human O14503
Background:	BHLHE40 encodes a basic helix-loop-helix protein expressed in various tissues. Expression in the chondrocytes is responsive to the addition of Bt2cAMP. The encoded protein is believed to be involved in the control of cell differentiation.
Synonyms:	DEC1, SHARP2, SHARP-2, STRA13



[View online »](#)

Note: **Molecular Weight:** 45510 Da
Protein Families: Transcription Factors
Protein Pathways: Circadian rhythm - mammal

Product images:

BHLHE40 Antibody (N-term) western blot analysis in mouse Neuro-2a cell line lysates (35ug/lane). This demonstrates the BHLHE40 antibody detected the BHLHE40 protein (arrow).