

## Product datasheet for **AP50372PU-N**

### **BHLHA15 (C-term) Rabbit Polyclonal Antibody**

#### Product data:

Product Type:	Primary Antibodies
Applications:	WB
Recommended Dilution:	<b>ELISA:</b> 1/1000. <b>Western blotting:</b> 1/100 - 1/500.
Reactivity:	Human, Mouse
Host:	Rabbit
Isotype:	Ig
Clonality:	Polyclonal
Immunogen:	KLH conjugated synthetic peptide between 167-197 amino acids from the C-terminal region of human BHLHA15
Specificity:	This antibody reacts to BHLHB8.
Formulation:	PBS containing 0.09% (W/V) sodium azide as preservative State: Aff - Purified State: Liquid purified Ig fraction
Concentration:	lot specific
Purification:	Affinity chromatography on Protein A
Conjugation:	Unconjugated
Storage:	Store the antibody undiluted at 2-8°C for one month or (in aliquots) at -20°C for longer. Avoid repeated freezing and thawing.
Stability:	Shelf life: one year from despatch.
Gene Name:	basic helix-loop-helix family member a15
Database Link:	<a href="#">Entrez Gene 17341 Mouse</a> <a href="#">Entrez Gene 168620 Human</a> <a href="#">Q7RTS1</a>



[View online »](#)

**Background:**

Plays a role in controlling the transcriptional activity of MYOD1, ensuring that expanding myoblast populations remain undifferentiated. Repression may occur through muscle-specific E-box occupancy by homodimers. May also negatively regulate bHLH-mediated transcription through an N-terminal repressor domain. Serves as a key regulator of acinar cell function, stability, and identity. Also required for normal organelle localization in exocrine cells and for mitochondrial calcium ion transport. May function as a unique regulator of gene expression in several different embryonic and postnatal cell lineages. Binds to the E-box consensus sequence 5'-CANNTG-3' (By similarity).

**Synonyms:**

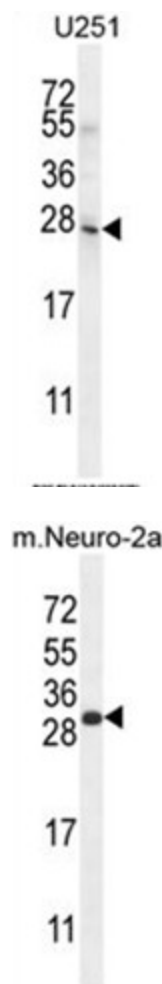
MIST1

**Note:**

**Molecular Weight:** 20818 Da

**Protein Pathways:**

Maturity onset diabetes of the young

**Product images:**


BHLHA15 Antibody (C-term) western blot analysis in U251 cell line lysates (35ug/lane). This demonstrates the BHLHA15 antibody detected the BHLHA15 protein (arrow).

BHLHA15 Antibody (C-term) western blot analysis in mouse Neuro-2a cell line lysates (35ug/lane). This demonstrates the BHLHA15 antibody detected the BHLHA15 protein (arrow).