

Product datasheet for **AP50369PU-N**

BEX1 (Center) Rabbit Polyclonal Antibody

Product data:

Product Type:	Primary Antibodies
Applications:	FC, IHC, WB
Recommended Dilution:	Peptide ELISA: 1/1000. Western blotting: 1/100-1/500. Immunohistochemistry on Paraffin Sections: 1/50-1/100. Flow Cytometry: 1/10-1/50.
Reactivity:	Human
Host:	Rabbit
Isotype:	Ig
Clonality:	Polyclonal
Immunogen:	KLH conjugated synthetic peptide between 63-90 amino acids from the Central region of Human BEX1.
Specificity:	This antibody reacts to BEX1.
Formulation:	PBS containing 0.09% (W/V) Sodium Azide as preservative State: Aff - Purified State: Liquid purified Ig fraction
Concentration:	lot specific
Purification:	Affinity chromatography on Protein A
Conjugation:	Unconjugated
Storage:	Store undiluted at 2-8°C for one month or (in aliquots) at -20°C for longer. Avoid repeated freezing and thawing.
Stability:	Shelf life: one year from despatch.
Gene Name:	brain expressed X-linked 1
Database Link:	Entrez Gene 55859 Human Q9HBH7



[View online »](#)

Background:

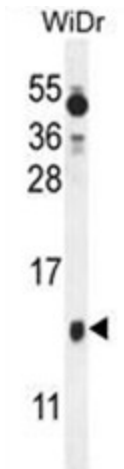
Signaling adapter molecule involved in p75NTR/NGFR signaling. Plays a role in cell cycle progression and neuronal differentiation. Inhibits neuronal differentiation in response to nerve growth factor (NGF). May act as a link between the cell cycle and neurotrophic factor signaling, possibly by functioning as an upstream modulator of receptor signaling, coordinating biological responses to external signals with internal cellular states (By similarity).

Synonyms:

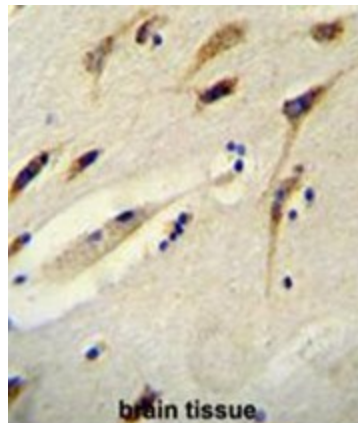
BEX2; HBEX2; HGR74-h

Note:

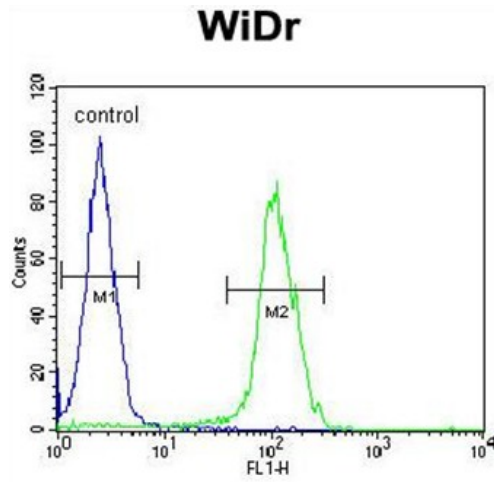
Molecular Weight: 14860 Da

Product images:


BEX1 Antibody (Center) western blot analysis in WiDr cell line lysates (35ug/lane). This demonstrates the BEX1 antibody detected the BEX1 protein (arrow).



BEX1 Antibody (Center) immunohistochemistry analysis in formalin fixed and paraffin embedded human brain tissue followed by peroxidase conjugation of the secondary antibody and DAB staining. This data demonstrates the use of the BEX1 Antibody (Center) for immunohistochemistry. Clinical relevance has not been evaluated.



BEX1 Antibody (Center) flow cytometric analysis of WiDr cells (right histogram) compared to a negative control cell (left histogram). FITC-conjugated goat-anti-rabbit secondary antibodies were used for the analysis.