

Product datasheet for **AP50368PU-N**

Bestrophin 2 (BEST2) (C-term) Rabbit Polyclonal Antibody

Product data:

Product Type:	Primary Antibodies
Applications:	IHC, WB
Recommended Dilution:	ELISA: 1/1000. Western blotting: 1/100 - 1/500. Immunohistochemistry on paraffin sections: 1/50 - 1/100.
Reactivity:	Human
Host:	Rabbit
Isotype:	Ig
Clonality:	Polyclonal
Immunogen:	KLH conjugated synthetic peptide between 381~411 amino acids from the C-terminal region of human BEST2
Specificity:	This antibody reacts to Bestrophin-2.
Formulation:	PBS containing 0.09% (W/V) sodium azide as preservative State: Aff - Purified State: Liquid purified Ig fraction
Concentration:	lot specific
Purification:	Affinity chromatography on Protein A
Conjugation:	Unconjugated
Storage:	Store the antibody undiluted at 2-8°C for one month or (in aliquots) at -20°C for longer. Avoid repeated freezing and thawing.
Stability:	Shelf life: one year from despatch.
Gene Name:	bestrophin 2
Database Link:	Entrez Gene 54831 Human Q8NFU1
Background:	BEST2 is a member of the bestrophin gene family of anion channels. Bestrophin genes share a similar gene structure with highly conserved exon-intron boundaries, but with distinct 3' ends. Bestrophins are transmembrane proteins that contain a homologous region rich in aromatic residues, including an invariant arg-phe-pro motif.



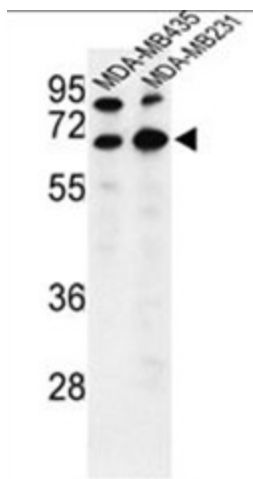
[View online »](#)

Synonyms: BEST2, VMD2L1

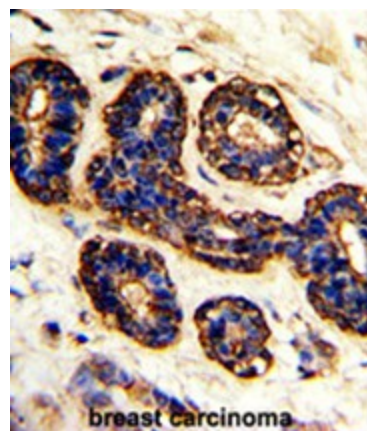
Note: **Molecular Weight:** 57139 Da

Protein Families: Transmembrane

Product images:



Western blot analysis of BEST2 Antibody (C-term) in MDA-MB435, MDA-MB231 cell line lysates (35ug/lane).BEST2 (arrow) was detected using the purified Pab.



Formalin-fixed and paraffin-embedded human breast carcinoma with BEST2 Antibody (C-term), which was peroxidase-conjugated to the secondary antibody, followed by DAB staining. This data demonstrates the use of this antibody for immunohistochemistry; clinical relevance has not been evaluated.