

Product datasheet for **AP50367PU-N**

C10orf30 (BEND7) (C-term) Rabbit Polyclonal Antibody

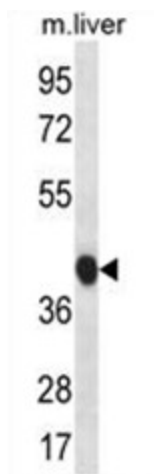
Product data:

Product Type:	Primary Antibodies
Applications:	IHC, WB
Recommended Dilution:	ELISA: 1/1000. Western blotting: 1/100 - 1/500. Immunohistochemistry on paraffin sections: 1/10 - 1/50.
Reactivity:	Human, Mouse
Host:	Rabbit
Isotype:	Ig
Clonality:	Polyclonal
Immunogen:	KLH conjugated synthetic peptide between 326-356 amino acids from the C-terminal region of human BEND7
Specificity:	This antibody reacts to BEND7.
Formulation:	PBS containing 0.09% (W/V) sodium azide as preservative State: Aff - Purified State: Liquid purified Ig fraction
Concentration:	lot specific
Purification:	Affinity chromatography on Protein A
Conjugation:	Unconjugated
Storage:	Store the antibody undiluted at 2-8°C for one month or (in aliquots) at -20°C for longer. Avoid repeated freezing and thawing.
Stability:	Shelf life: one year from despatch.
Gene Name:	BEN domain containing 7
Database Link:	Entrez Gene 222389 Human Q8N7W2
Synonyms:	C10orf30
Note:	Molecular Weight: 57549 Da

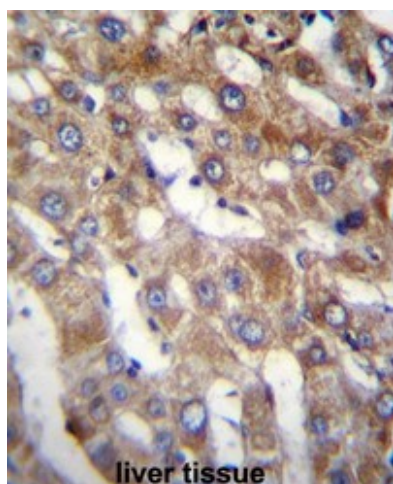


[View online »](#)

Product images:



BEND7 Antibody (C-term) western blot analysis in mouse liver tissue lysates (35ug/lane). This demonstrates the BEND7 antibody detected the BEND7 protein (arrow).



BEND7 Antibody (C-term) immunohistochemistry analysis in formalin fixed and paraffin embedded human liver tissue followed by peroxidase conjugation of the secondary antibody and DAB staining. This data demonstrates the use of BEND7 Antibody (C-term) for immunohistochemistry. Clinical relevance has not been evaluated.