

## Product datasheet for **AP50366PU-N**

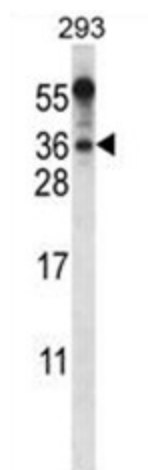
### **BEND6 (C-term) Rabbit Polyclonal Antibody**

#### **Product data:**

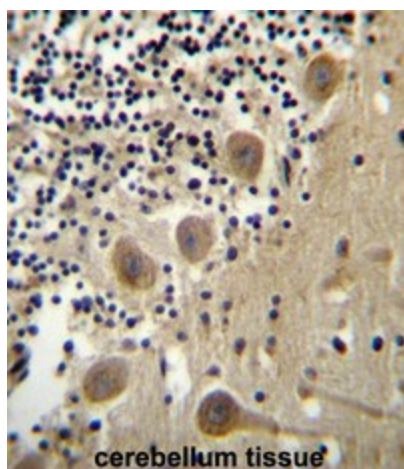
Product Type:	Primary Antibodies
Applications:	IHC, WB
Recommended Dilution:	<b>ELISA:</b> 1/1000. <b>Western blotting:</b> 1/100 - 1/500. <b>Immunohistochemistry on paraffin sections:</b> 1/10 - 1/50.
Reactivity:	Human
Host:	Rabbit
Isotype:	Ig
Clonality:	Polyclonal
Immunogen:	KLH conjugated synthetic peptide between 225-254 amino acids from the C-terminal region of human BEND6
Specificity:	This antibody reacts to BEND6.
Formulation:	PBS containing 0.09% (W/V) sodium azide as preservative State: Aff - Purified State: Liquid purified Ig fraction
Concentration:	lot specific
Purification:	Affinity chromatography on Protein A
Conjugation:	Unconjugated
Storage:	Store the antibody undiluted at 2-8°C for one month or (in aliquots) at -20°C for longer. Avoid repeated freezing and thawing.
Stability:	Shelf life: one year from despatch.
Gene Name:	BEN domain containing 6
Database Link:	<a href="#">Entrez Gene 221336 Human Q5SZJ8</a>
Synonyms:	BEN domain-containing protein 6
Note:	<b>Molecular Weight:</b> 31222 Da



[View online »](#)

**Product images:**

BEND6 Antibody (C-term) western blot analysis in 293 cell line lysates (35ug/lane). This demonstrates the BEND6 antibody detected the BEND6 protein (arrow).



BEND6 Antibody (C-term) immunohistochemistry analysis in formalin fixed and paraffin embedded human cerebellum tissue followed by peroxidase conjugation of the secondary antibody and DAB staining. This data demonstrates the use of BEND6 Antibody (C-term) for immunohistochemistry. Clinical relevance has not been evaluated.