

## Product datasheet for **AP50365PU-N**

### **BEND4 (N-term) Rabbit Polyclonal Antibody**

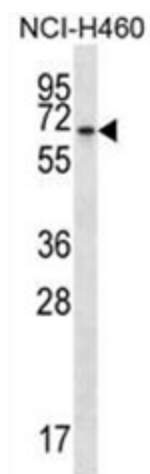
#### Product data:

Product Type:	Primary Antibodies
Applications:	WB
Recommended Dilution:	<b>ELISA:</b> 1/1000. <b>Western blotting:</b> 1/100 - 1/500.
Reactivity:	Human
Host:	Rabbit
Isotype:	Ig
Clonality:	Polyclonal
Immunogen:	KLH conjugated synthetic peptide between 11-40 amino acids from the N-terminal region of human BEND4
Specificity:	This antibody reacts to BEND4.
Formulation:	PBS containing 0.09% (W/V) sodium azide as preservative State: Aff - Purified State: Liquid purified Ig fraction
Concentration:	lot specific
Purification:	Affinity chromatography on Protein A
Conjugation:	Unconjugated
Storage:	Store the antibody undiluted at 2-8°C for one month or (in aliquots) at -20°C for longer. Avoid repeated freezing and thawing.
Stability:	Shelf life: one year from despatch.
Gene Name:	BEN domain containing 4
Database Link:	<a href="#">Entrez Gene 389206 Human Q6ZU67</a>
Synonyms:	CCDC4; FLJ35632; FLJ43965; MGC157807; MGC157808
Note:	<b>Molecular Weight:</b> 57856 Da



[View online »](#)

## Product images:



BEND4 Antibody (N-term) western blot analysis in NCI-H460 cell line lysates (35ug/lane). This demonstrates the BEND4 antibody detected the BEND4 protein (arrow).