

## Product datasheet for **AP50364PU-N**

### **BEND3 (C-term) Rabbit Polyclonal Antibody**

#### Product data:

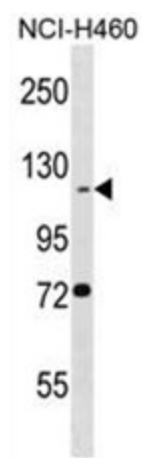
<b>Product Type:</b>	Primary Antibodies
<b>Applications:</b>	WB
<b>Recommended Dilution:</b>	<b>ELISA:</b> 1/1000. <b>Western blotting:</b> 1/100 - 1/500.
<b>Reactivity:</b>	Human
<b>Host:</b>	Rabbit
<b>Isotype:</b>	Ig
<b>Clonality:</b>	Polyclonal
<b>Immunogen:</b>	KLH conjugated synthetic peptide between 628-657 amino acids from the C-terminal region of human BEND3
<b>Specificity:</b>	This antibody reacts to BEND3.
<b>Formulation:</b>	PBS containing 0.09% (W/V) sodium azide as preservative State: Aff - Purified State: Liquid purified Ig fraction
<b>Concentration:</b>	lot specific
<b>Purification:</b>	Affinity chromatography on Protein A
<b>Conjugation:</b>	Unconjugated
<b>Storage:</b>	Store the antibody undiluted at 2-8°C for one month or (in aliquots) at -20°C for longer. Avoid repeated freezing and thawing.
<b>Stability:</b>	Shelf life: one year from despatch.
<b>Gene Name:</b>	BEN domain containing 3
<b>Database Link:</b>	<a href="#">Entrez Gene 57673 Human Q5T5X7</a>



**Synonyms:** BEN domain-containing protein 3, KIAA1553

**Note:** **Molecular Weight:** 94475 Da

**Product images:**



BEND3 Antibody (C-term) western blot analysis in NCI-H460 cell line lysates (35ug/lane). This demonstrates the BEND3 antibody detected the BEND3 protein (arrow).