

Product datasheet for **AP50362PU-N**

BCMO1 (BCO1) (Center) Rabbit Polyclonal Antibody

Product data:

Product Type:	Primary Antibodies
Applications:	WB
Recommended Dilution:	ELISA: 1/1000. Western blotting: 1/100 - 1/500.
Reactivity:	Human
Host:	Rabbit
Isotype:	Ig
Clonality:	Polyclonal
Immunogen:	KLH conjugated synthetic peptide between 270-300 amino acids from the Central region of human BCMO1
Specificity:	This antibody reacts to BCMO1.
Formulation:	PBS containing 0.09% (W/V) sodium azide as preservative State: Aff - Purified State: Liquid purified Ig fraction
Concentration:	lot specific
Purification:	Affinity chromatography on Protein A
Conjugation:	Unconjugated
Storage:	Store the antibody undiluted at 2-8°C for one month or (in aliquots) at -20°C for longer. Avoid repeated freezing and thawing.
Stability:	Shelf life: one year from despatch.
Gene Name:	beta-carotene oxygenase 1
Database Link:	Entrez Gene 53630 Human Q9HAY6
Background:	Vitamin A metabolism is important for vital processes such as vision, embryonic development, cell differentiation, and membrane and skin protection. The protein encoded by this gene is a key enzyme in beta-carotene metabolism to vitamin A. It catalyzes the oxidative cleavage of beta,beta-carotene into two retinal molecules.
Synonyms:	BCDO, BCDO1

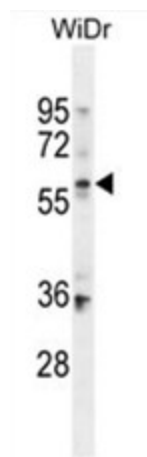


[View online »](#)

Note: **Molecular Weight:** 62637 Da

Protein Pathways: Metabolic pathways, Retinol metabolism

Product images:



BCMO1 Antibody (Center) western blot analysis in WiDr cell line lysates (35ug/lane). This demonstrates the BCMO1 antibody detected the BCMO1 protein (arrow).