

## Product datasheet for **AP50361PU-N**

### **BTF (BCLAF1) (C-term) Rabbit Polyclonal Antibody**

#### **Product data:**

Product Type:	Primary Antibodies
Applications:	IHC, WB
Recommended Dilution:	<b>ELISA:</b> 1/1000. <b>Western blotting:</b> 1/100 - 1/500. <b>Immunohistochemistry on paraffin sections:</b> 1/50 - 1/100.
Reactivity:	Human
Host:	Rabbit
Isotype:	Ig
Clonality:	Polyclonal
Immunogen:	KLH conjugated synthetic peptide between 658-688 amino acids from the C-terminal region of human BCLAF1
Specificity:	This antibody reacts to BCLAF1.
Formulation:	PBS containing 0.09% (W/V) sodium azide as preservative State: Aff - Purified State: Liquid purified Ig fraction
Concentration:	lot specific
Purification:	Affinity chromatography on Protein A
Conjugation:	Unconjugated
Storage:	Store the antibody undiluted at 2-8°C for one month or (in aliquots) at -20°C for longer. Avoid repeated freezing and thawing.
Stability:	Shelf life: one year from despatch.
Gene Name:	BCL2 associated transcription factor 1
Database Link:	<a href="#">Entrez Gene 9774 Human Q9NYF8</a>



[View online »](#)

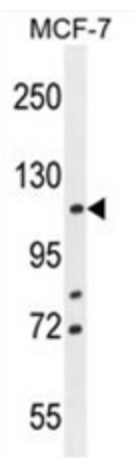
**Background:** This gene encodes a transcriptional repressor that interacts with several members of the BCL2 family of proteins. Overexpression of this protein induces apoptosis, which can be suppressed by co-expression of BCL2 proteins. The protein localizes to dot-like structures throughout the nucleus, and redistributes to a zone near the nuclear envelope in cells undergoing apoptosis. Multiple transcript variants encoding different isoforms have been found for this gene.

**Synonyms:** KIAA0164, Aa2-041

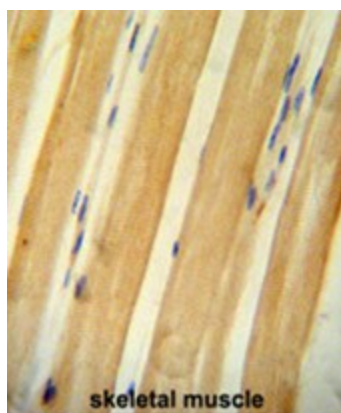
**Note:** **Molecular Weight:** 106122 Da

**Protein Families:** Transcription Factors

### Product images:



BCLAF1 Antibody (C-term) western blot analysis in MCF-7 cell line lysates (35ug/lane). This demonstrates the BCLAF1 antibody detected the BCLAF1 protein (arrow).



BCLAF1 antibody (C-term) immunohistochemistry analysis in formalin fixed and paraffin embedded human skeletal muscle followed by peroxidase conjugation of the secondary antibody and DAB staining. This data demonstrates the use of the BCLAF1 antibody (C-term) for immunohistochemistry. Clinical relevance has not been evaluated.