

Product datasheet for **AP50359PU-N**

bcl 6 (BCL6) (C-term) Rabbit Polyclonal Antibody

Product data:

| | |
|-----------------------|---|
| Product Type: | Primary Antibodies |
| Applications: | WB |
| Recommended Dilution: | ELISA: 1/1000. Western blotting: 1/100 - 1/500. |
| Reactivity: | Human |
| Host: | Rabbit |
| Isotype: | Ig |
| Clonality: | Polyclonal |
| Immunogen: | KLH conjugated synthetic peptide between 675-704 amino acids from the C-terminal region of human BCL6 |
| Specificity: | This antibody reacts to Bcl-6. |
| Formulation: | PBS containing 0.09% (W/V) sodium azide as preservative State: Aff - Purified State: Liquid purified Ig fraction |
| Concentration: | lot specific |
| Purification: | Affinity chromatography on Protein A |
| Conjugation: | Unconjugated |
| Storage: | Store the antibody undiluted at 2-8°C for one month or (in aliquots) at -20°C for longer. Avoid repeated freezing and thawing. |
| Stability: | Shelf life: one year from despatch. |
| Gene Name: | B-cell CLL/lymphoma 6 |
| Database Link: | Entrez Gene 604 Human P41182 |



[View online »](#)

Background:

The protein encoded by this gene is a zinc finger transcription factor and contains an N-terminal POZ domain. This protein acts as a sequence-specific repressor of transcription, and has been shown to modulate the transcription of START-dependent IL-4 responses of B cells. This protein can interact with a variety of POZ-containing proteins that function as transcription corepressors. This gene is found to be frequently translocated and hypermutated in diffuse large-cell lymphoma (DLCL), and may be involved in the pathogenesis of DLCL. Alternatively spliced transcript variants encoding different protein isoforms have been found for this gene.

Synonyms:

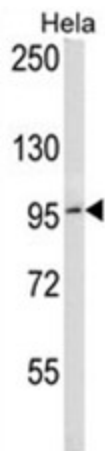
BCL6, BCL5, BCL-5, LAZ3, LAZ-3, ZBTB27, ZNF51

Note:

Molecular Weight: 78846 Da

Protein Families:

Druggable Genome, Transcription Factors

Product images:

BCL6 Antibody (C-term) western blot analysis in HeLa cell line lysates (35ug/lane). This demonstrates the BCL6 antibody detected the BCL6 protein (arrow).