

## Product datasheet for **AP50357PU-N**

### **BCL2A1 (Center) Rabbit Polyclonal Antibody**

#### Product data:

Product Type:	Primary Antibodies
Applications:	FC, IHC, WB
Recommended Dilution:	<b>ELISA:</b> 1/1000. <b>Western blotting:</b> 1/50 - 1/100. <b>Immunohistochemistry on paraffin sections:</b> 1/50 - 1/100. <b>Flow cytometric:</b> 1/10 - 1/50.
Reactivity:	Human
Host:	Rabbit
Isotype:	Ig
Clonality:	Polyclonal
Immunogen:	KLH conjugated synthetic peptide between 63~92 amino acids from the Center region of human BCL2A1
Specificity:	This antibody reacts to Bcl-2-like 5.
Formulation:	PBS containing 0.09% (W/V) sodium azide as preservative State: Purified State: Liquid purified Ig fraction
Concentration:	lot specific
Purification:	Affinity chromatography on Protein A
Conjugation:	Unconjugated
Storage:	Store the antibody undiluted at 2-8°C for one month or (in aliquots) at -20°C for longer. Avoid repeated freezing and thawing.
Stability:	Shelf life: one year from despatch.
Gene Name:	BCL2 related protein A1
Database Link:	<a href="#">Entrez Gene 597 Human Q16548</a>



[View online »](#)

**Background:**

Bcl-2 related Protein A1 is a member of the BCL-2 protein family. The proteins of this family form hetero- or homodimers and act as anti- and pro-apoptotic regulators that are involved in a wide variety of cellular activities such as embryonic development, homeostasis and tumorigenesis. The protein encoded by this gene is able to reduce the release of pro-apoptotic cytochrome c from mitochondria and block caspase activation. This gene is a direct transcription target of NF-kappa B in response to inflammatory mediators, and has been shown to be up-regulated by different extracellular signals, such as granulocyte-macrophage colony-stimulating factor (GM-CSF), CD40, phorbol ester and inflammatory cytokine TNF and IL-1, which suggests a cytoprotective function that is essential for lymphocyte activation as well as cell survival.

**Synonyms:**

BCL2A1, BCL2L5, BFL1, GRS, HBPA1, Bcl-2-like protein 5, Protein BFL-1

**Note:**

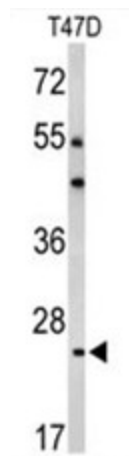
**Molecular Weight:** 20132 Da

**Protein Families:**

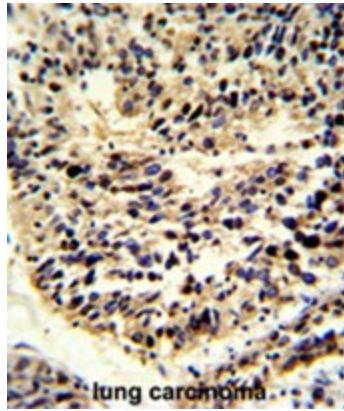
Druggable Genome

**Protein Pathways:**

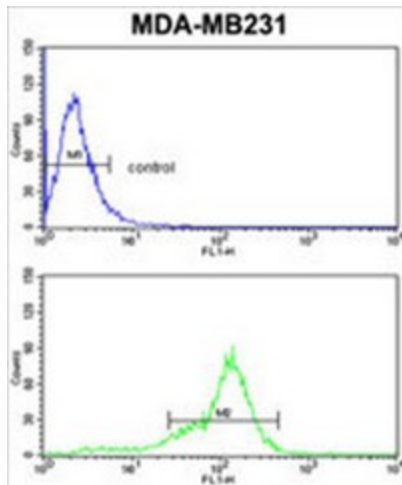
Metabolic pathways

**Product images:**


Western blot analysis of BCL2A1 Antibody (Center) in T47D cell line lysates (35ug/lane). BCL2A1 (arrow) was detected using the purified Pab.



Formalin-fixed and paraffin-embedded human lung carcinoma reacted with BCL2A1 Antibody (Center), which was peroxidase-conjugated to the secondary antibody, followed by DAB staining. This data demonstrates the use of this antibody for immunohistochemistry; clinical relevance has not been evaluated.



BCL2A1 Antibody (Center) flow cytometric analysis of MDA-MB231 cells (bottom histogram) compared to a negative control cell (top histogram). FITC-conjugated goat-anti-rabbit secondary antibodies were used for the analysis.