

Product datasheet for **AP50356PU-N**

CTIP2 (BCL11B) (Center) Rabbit Polyclonal Antibody

Product data:

Product Type:	Primary Antibodies
Applications:	WB
Recommended Dilution:	ELISA: 1/1000. Western blotting: 1/100 - 1/500.
Reactivity:	Human
Host:	Rabbit
Isotype:	Ig
Clonality:	Polyclonal
Immunogen:	KLH conjugated synthetic peptide between 307-334 amino acids from the Central region of human BCL11B
Specificity:	This antibody reacts to Bcl-11B.
Formulation:	PBS containing 0.09% (W/V) sodium azide as preservative State: Aff - Purified State: Liquid purified Ig fraction
Concentration:	lot specific
Purification:	Affinity chromatography on Protein A
Conjugation:	Unconjugated
Storage:	Store the antibody undiluted at 2-8°C for one month or (in aliquots) at -20°C for longer. Avoid repeated freezing and thawing.
Stability:	Shelf life: one year from despatch.
Gene Name:	B-cell CLL/lymphoma 11B
Database Link:	Entrez Gene 64919 Human Q9C0K0
Background:	This gene encodes a C2H2-type zinc finger protein and is closely related to BCL11A, a gene whose translocation may be associated with B-cell malignancies. The specific function of this gene has not yet been determined. Two alternatively spliced transcript variants, which encode distinct isoforms, have been reported.
Synonyms:	CTIP2, RIT1, BCL11B

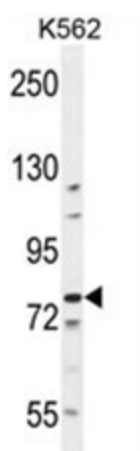


[View online »](#)

Note: **Molecular Weight:** 95519 Da ;Isoform 88kd Da

Protein Families: Druggable Genome

Product images:



BCL11B Antibody (Center) western blot analysis in K562 cell line lysates (35ug/lane). This demonstrates the BCL11B antibody detected the BCL11B protein (arrow).