

Product datasheet for **AP50355PU-N**

CTIP1 (BCL11A) (C-term) Rabbit Polyclonal Antibody

Product data:

Product Type:	Primary Antibodies
Applications:	WB
Recommended Dilution:	ELISA: 1/1000. Western blotting: 1/100 - 1/500.
Reactivity:	Human
Host:	Rabbit
Isotype:	Ig
Clonality:	Polyclonal
Immunogen:	KLH conjugated synthetic peptide between 806~835 amino acids from the C-terminal region of human BCL11A
Specificity:	This antibody reacts to Bcl-11A.
Formulation:	PBS containing 0.09% (W/V) sodium azide as preservative State: Aff - Purified State: Liquid purified Ig fraction
Concentration:	lot specific
Purification:	Affinity chromatography on Protein A
Conjugation:	Unconjugated
Storage:	Store the antibody undiluted at 2-8°C for one month or (in aliquots) at -20°C for longer. Avoid repeated freezing and thawing.
Stability:	Shelf life: one year from despatch.
Gene Name:	B-cell CLL/lymphoma 11A
Database Link:	Entrez Gene 53335 Human Q9H165
Background:	BCL11A is a C2H2 type zinc-finger protein by its similarity to the mouse Bcl11a/Evi9 protein. The corresponding mouse gene is a common site of retroviral integration in myeloid leukemia, and may function as a leukemia disease gene, in part, through its interaction with BCL6.
Synonyms:	BCL11A, CTIP1, EVI9, KIAA1809

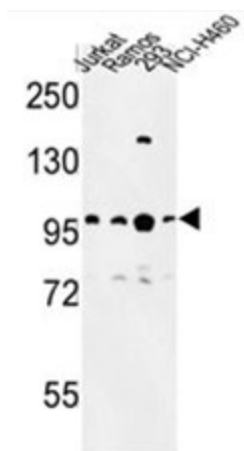


[View online »](#)

Note: **Molecular Weight:** 91197 Da

Protein Families: Transcription Factors

Product images:



Western blot analysis of BCL11A Antibody (C-term) in Jurkat, Ramos, 293, NCI-H460 cell line lysates (35ug/lane). BCL11A (arrow) was detected using the purified Pab.