

Product datasheet for **AP50350PU-N**

BCAT1 (Center) Rabbit Polyclonal Antibody

Product data:

Product Type:	Primary Antibodies
Applications:	IHC, WB
Recommended Dilution:	ELISA: 1/1000. Western blotting: 1/100 - 1/500. Immunohistochemistry on paraffin sections: 1/50 - 1/100.
Reactivity:	Human
Host:	Rabbit
Isotype:	Ig
Clonality:	Polyclonal
Immunogen:	KLH conjugated synthetic peptide between 88-115 amino acids from the Central region of human BCAT1
Specificity:	This antibody reacts to BCAT1.
Formulation:	PBS containing 0.09% (W/V) sodium azide as preservative State: Aff - Purified State: Liquid purified Ig fraction
Concentration:	lot specific
Purification:	Affinity chromatography on Protein A
Conjugation:	Unconjugated
Storage:	Store the antibody undiluted at 2-8°C for one month or (in aliquots) at -20°C for longer. Avoid repeated freezing and thawing.
Stability:	Shelf life: one year from despatch.
Gene Name:	branched chain amino acid transaminase 1
Database Link:	Entrez Gene 586 Human P54687



[View online »](#)

Background:

This gene encodes the cytosolic form of the enzyme branched-chain amino acid transaminase. This enzyme catalyzes the reversible transamination of branched-chain alpha-keto acids to branched-chain L-amino acids essential for cell growth. Two different clinical disorders have been attributed to a defect of branched-chain amino acid transamination: hypervalinemia and hyperleucine-isoleucinemia. As there is also a gene encoding a mitochondrial form of this enzyme, mutations in either gene may contribute to these disorders. Alternatively spliced transcript variants have been described.

Synonyms:

BCT1, ECA39, BCAT(c)

Note:

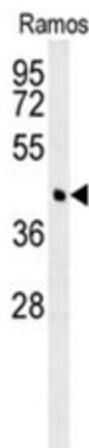
Molecular Weight: 42966 Da

Protein Families:

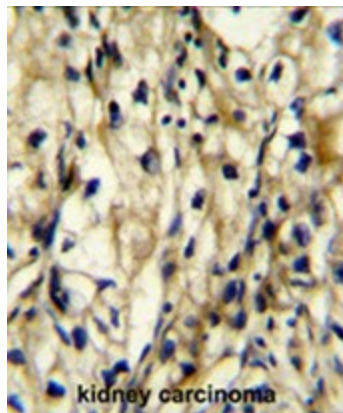
Druggable Genome

Protein Pathways:

Metabolic pathways, Pantothenate and CoA biosynthesis, Valine, leucine and isoleucine biosynthesis, Valine, leucine and isoleucine degradation

Product images:


BCAT1 Antibody (Center) western blot analysis in Ramos cell line lysates (35ug/lane). This demonstrates the BCAT1 antibody detected the BCAT1 protein (arrow).



BCAT1 Antibody (Center) immunohistochemistry analysis in formalin fixed and paraffin embedded human kidney carcinoma followed by peroxidase conjugation of the secondary antibody and DAB staining. This data demonstrates the use of the BCAT1 Antibody (Center) for immunohistochemistry. Clinical relevance has not been evaluated.