

Product datasheet for **AP50349PU-N**

NABC1 (BCAS1) (N-term) Rabbit Polyclonal Antibody

Product data:

Product Type:	Primary Antibodies
Applications:	WB
Recommended Dilution:	ELISA: 1/1000. Western blotting: 1/100 - 1/500.
Reactivity:	Human
Host:	Rabbit
Isotype:	Ig
Clonality:	Polyclonal
Immunogen:	KLH conjugated synthetic peptide between 1-30 amino acids from the N-terminal region of human BCAS1
Specificity:	This antibody reacts to BCAS1.
Formulation:	PBS containing 0.09% (W/V) sodium azide as preservative State: Aff - Purified State: Liquid purified Ig fraction
Concentration:	lot specific
Purification:	Affinity chromatography on Protein A
Conjugation:	Unconjugated
Storage:	Store the antibody undiluted at 2-8°C for one month or (in aliquots) at -20°C for longer. Avoid repeated freezing and thawing.
Stability:	Shelf life: one year from despatch.
Gene Name:	breast carcinoma amplified sequence 1
Database Link:	Entrez Gene 8537 Human O75363



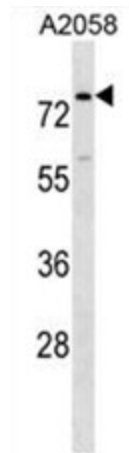
[View online »](#)

Background:

This gene resides in a region at 20q13 which is amplified in a variety of tumor types and associated with more aggressive tumor phenotypes. Among the genes identified from this region, it was found to be highly expressed in three amplified breast cancer cell lines and in one breast tumor without amplification at 20q13.2. However, this gene is not in the common region of maximal amplification and its expression was not detected in the breast cancer cell line MCF7, in which this region is highly amplified. Although not consistently expressed, this gene is a candidate oncogene.

Synonyms:

AIBC1

Note:**Molecular Weight:** 61709 Da**Product images:**

BCAS1 Antibody (N-term) western blot analysis in A2058 cell line lysates (35ug/lane). This demonstrates the BCAS1 antibody detected the BCAS1 protein (arrow).