

## Product datasheet for **AP50347PU-N**

### **C11orf17 (AKIP1) (N-term) Rabbit Polyclonal Antibody**

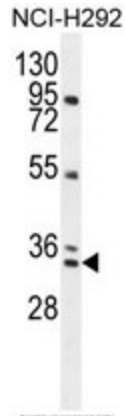
#### **Product data:**

Product Type:	Primary Antibodies
Applications:	WB
Recommended Dilution:	<b>ELISA:</b> 1/1000. <b>Western blotting:</b> 1/100 - 1/500.
Reactivity:	Hamster, Human, Mouse
Host:	Rabbit
Isotype:	Ig
Clonality:	Polyclonal
Immunogen:	KLH conjugated synthetic peptide between 61-91 amino acids from the N-terminal region of human BCA3
Specificity:	This antibody reacts to BCA3.
Formulation:	PBS containing 0.09% (W/V) sodium azide as preservative State: Aff - Purified State: Liquid purified Ig fraction
Concentration:	lot specific
Purification:	Affinity chromatography on Protein A
Conjugation:	Unconjugated
Storage:	Store the antibody undiluted at 2-8°C for one month or (in aliquots) at -20°C for longer. Avoid repeated freezing and thawing.
Stability:	Shelf life: one year from despatch.
Gene Name:	A-kinase interacting protein 1
Database Link:	<a href="#">Entrez Gene 56672 Human Q9NQ31</a>
Synonyms:	AKIP1, C11orf17
Note:	<b>Molecular Weight:</b> 23114 Da

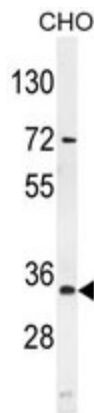


[View online »](#)

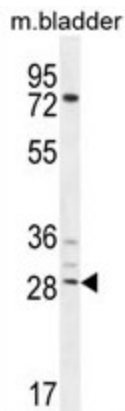
Product images:



BCA3 Antibody (N-term) western blot analysis in NCI-H292 cell line lysates (35ug/lane). This demonstrates the BCA3 antibody detected the BCA3 protein (arrow).



BCA3 Antibody (N-term) western blot analysis in mouse CHO cell line lysates (35ug/lane). This demonstrates the BCA3 antibody detected the BCA3 protein (arrow).



BCA3 Antibody (N-term) western blot analysis in mouse bladder tissue lysates (35ug/lane). This demonstrates the BCA3 antibody detected the BCA3 protein (arrow).