

## Product datasheet for **AP50345PU-N**

### **BATF (N-term) Rabbit Polyclonal Antibody**

#### **Product data:**

Product Type:	Primary Antibodies
Applications:	WB
Recommended Dilution:	<b>ELISA:</b> 1/1000. <b>Western blotting:</b> 1/100 - 1/500.
Reactivity:	Human
Host:	Rabbit
Isotype:	Ig
Clonality:	Polyclonal
Immunogen:	KLH conjugated synthetic peptide between 6-35 amino acids from the N-terminal region of human BATF
Specificity:	This antibody reacts to BATF.
Formulation:	PBS containing 0.09% (W/V) sodium azide as preservative State: Aff - Purified State: Liquid purified Ig fraction
Concentration:	lot specific
Purification:	Affinity chromatography on Protein A
Conjugation:	Unconjugated
Storage:	Store the antibody undiluted at 2-8°C for one month or (in aliquots) at -20°C for longer. Avoid repeated freezing and thawing.
Stability:	Shelf life: one year from despatch.
Gene Name:	basic leucine zipper ATF-like transcription factor
Database Link:	<a href="#">Entrez Gene 10538 Human Q16520</a>
Background:	The protein encoded by this gene is a nuclear basic leucine zipper protein that belongs to the AP-1/ATF superfamily of transcription factors. The leucine zipper of this protein mediates dimerization with members of the Jun family of proteins. This protein is thought to be a negative regulator of AP-1/ATF transcriptional events.
Synonyms:	B-ATF, SFA2, SFA-2

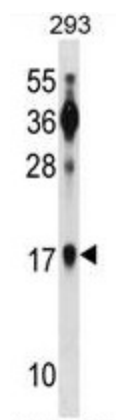


[View online »](#)

Note: **Molecular Weight:** 14120 Da

Protein Families: Transcription Factors

**Product images:**



BATF Antibody (N-term) western blot analysis in 293 cell line lysates (35ug/lane). This demonstrates the BATF antibody detected the BATF protein (arrow).