

Product datasheet for **AP50344PU-N**

BAT3 (BAG6) (C-term) Rabbit Polyclonal Antibody

Product data:

Product Type:	Primary Antibodies
Applications:	WB
Recommended Dilution:	ELISA: 1/1000. Western blotting: 1/1000.
Reactivity:	Human
Host:	Rabbit
Isotype:	Ig
Clonality:	Polyclonal
Immunogen:	KLH conjugated synthetic peptide between 1071-1099 amino acids from the C-terminal region of human BAT3
Specificity:	This antibody reacts to BAT3.
Formulation:	PBS containing 0.09% (W/V) sodium azide as preservative State: Aff - Purified State: Liquid purified Ig fraction
Concentration:	lot specific
Purification:	Affinity chromatography on Protein A
Conjugation:	Unconjugated
Storage:	Store the antibody undiluted at 2-8°C for one month or (in aliquots) at -20°C for longer. Avoid repeated freezing and thawing.
Stability:	Shelf life: one year from despatch.
Gene Name:	BCL2 associated athanogene 6
Database Link:	Entrez Gene 7917 Human P46379



[View online »](#)

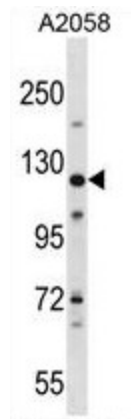
Background: This gene was first characterized as part of a cluster of genes located within the human major histocompatibility complex class III region. This gene encodes a nuclear protein that is cleaved by caspase 3 and is implicated in the control of apoptosis. In addition, the protein forms a complex with E1A binding protein p300 and is required for the acetylation of p53 in response to DNA damage. Multiple transcript variants encoding different isoforms have been found for this gene.

Synonyms: Protein G3, D6S52E

Note: **Molecular Weight:** 119409 Da

Protein Families: Druggable Genome, Stem cell - Pluripotency

Product images:



BAT3 Antibody (C-term) western blot analysis in A2058 cell line lysates (35ug/lane). This demonstrates the BAT3 antibody detected the BAT3 protein (arrow).