

Product datasheet for **AP50343PU-N**

BASP1 (Center) Rabbit Polyclonal Antibody

Product data:

Product Type:	Primary Antibodies
Applications:	WB
Recommended Dilution:	ELISA: 1/1000. Western blotting: 1/100 - 1/500.
Reactivity:	Human, Mouse
Host:	Rabbit
Isotype:	Ig
Clonality:	Polyclonal
Immunogen:	KLH conjugated synthetic peptide between 129~159 amino acids from the Central region of human BASP1
Specificity:	This antibody reacts to BASP1.
Formulation:	PBS containing 0.09% (W/V) sodium azide as preservative State: Aff - Purified State: Liquid purified Ig fraction
Concentration:	lot specific
Purification:	Affinity chromatography on Protein A
Conjugation:	Unconjugated
Storage:	Store the antibody undiluted at 2-8°C for one month or (in aliquots) at -20°C for longer. Avoid repeated freezing and thawing.
Stability:	Shelf life: one year from despatch.
Gene Name:	brain abundant membrane attached signal protein 1
Database Link:	Entrez Gene 70350 Mouse Entrez Gene 10409 Human P80723
Background:	BASP1 encodes a membrane bound protein with several transient phosphorylation sites and PEST motifs. Conservation of proteins with PEST sequences among different species supports their functional significance. PEST sequences typically occur in proteins with high turnover rates. Immunological characteristics of this protein are species specific. This protein also undergoes N-terminal myristoylation.

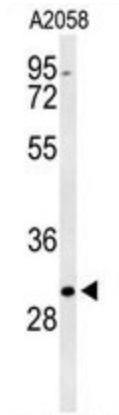


[View online »](#)

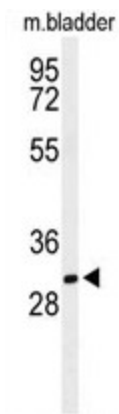
Synonyms: Brain acid soluble protein 1, NAP22

Note: **Molecular Weight:** 22693 Da

Product images:



Western blot analysis of BASP1 Antibody (Center) in A2058 cell line lysates (35ug/lane). BASP1 (arrow) was detected using the purified Pab.



Western blot analysis of BASP1 Antibody (Center) in mouse bladder tissue lysates (35ug/lane). BASP1 (arrow) was detected using the purified Pab.