

## Product datasheet for **AP50342PU-N**

### **BARX1 (C-term) Rabbit Polyclonal Antibody**

#### **Product data:**

Product Type:	Primary Antibodies
Applications:	WB
Recommended Dilution:	<b>ELISA:</b> 1/1000. <b>Western blotting:</b> 1/100 - 1/500.
Reactivity:	Human
Host:	Rabbit
Isotype:	Ig
Clonality:	Polyclonal
Immunogen:	KLH conjugated synthetic peptide between 210-240 amino acids from the C-terminal region of human BARX1
Specificity:	This antibody reacts to BARX1.
Formulation:	PBS containing 0.09% (W/V) sodium azide as preservative State: Aff - Purified State: Liquid purified Ig fraction
Concentration:	lot specific
Purification:	Affinity chromatography on Protein A
Conjugation:	Unconjugated
Storage:	Store the antibody undiluted at 2-8°C for one month or (in aliquots) at -20°C for longer. Avoid repeated freezing and thawing.
Stability:	Shelf life: one year from despatch.
Gene Name:	BARX homeobox 1
Database Link:	<a href="#">Entrez Gene 56033 Human Q9HBU1</a>
Background:	This gene encodes a member of the Bar subclass of homeobox transcription factors. Studies of the mouse and chick homolog suggest the encoded protein may play a role in developing teeth and craniofacial mesenchyme of neural crest origin. The protein may also be associated with differentiation of stomach epithelia.
Synonyms:	Homeobox protein BarH-like 1

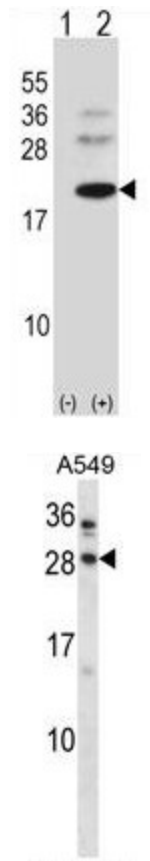


[View online »](#)

**Note:** **Molecular Weight:** 27298 Da

**Protein Families:** Transcription Factors

**Product images:**



Western blot analysis of BARX1 (arrow) using rabbit polyclonal BARX1 Antibody (C-term). 293 cell lysates (2 ug/lane) either nontransfected (Lane 1) or transiently transfected (Lane 2) with the BARX1 gene.

BARX1 Antibody (C-term) western blot analysis in A549 cell line lysates (35ug/lane). This demonstrates the BARX1 antibody detected the BARX1 protein (arrow).